



Efficient lighting. More Savings

High energy savings

Dayline offers high energy savings up to 65%*

High lumen efficacy

With efficacy of up to 100 lm/W, the luminaire is highly efficient

No maintenance

With Dayline, operational costs are reduced as it requires no maintenance

Key features

- High quality light, CRI=80
- Long life of up to 50,000 hours
- Soft opal diffuser provides high visual comfort
- Eco friendly

Technical specifications

Type	RC240B LED
System Wattage (W)	30, 42
Lumen Output (lm)	3000, 3600
System Efficacy (lm/W)	up to 100
Color Temperature (K)	3500, 4000
CRI	80
Housing	Polyester power coated
Cover	Acrylic
Mounting	Recessed
THD	<10%
PF	>0.9
Operating Voltage	220-240V , 50 / 60 Hz

Dayline

Dayline is an efficient luminaire which saves up to 65%* energy as compared to 2 x PLL 36W luminaire. It ensures long, maintenance free life and comes with DALI dimming options. Dayline is a perfect combination of innovative design and efficient LED technology.



*Conditions apply



EnduraLED Bulkhead

An innovative and reliable LED solution that fits seamlessly in a variety of applications. This luminaire can be installed as ceiling mounted and wall mounted. It serves as a simple energy efficient alternative to CFL/ incandescent bulkhead luminaires.

Versatile lighting solution

80%* energy savings

The luminaire offers high energy savings without compromising on lighting quality

IK09 certified- Impact resistant

Minimises commonly observed glass breakage issues either due to transit or at site

IP66- Protected against dust and water

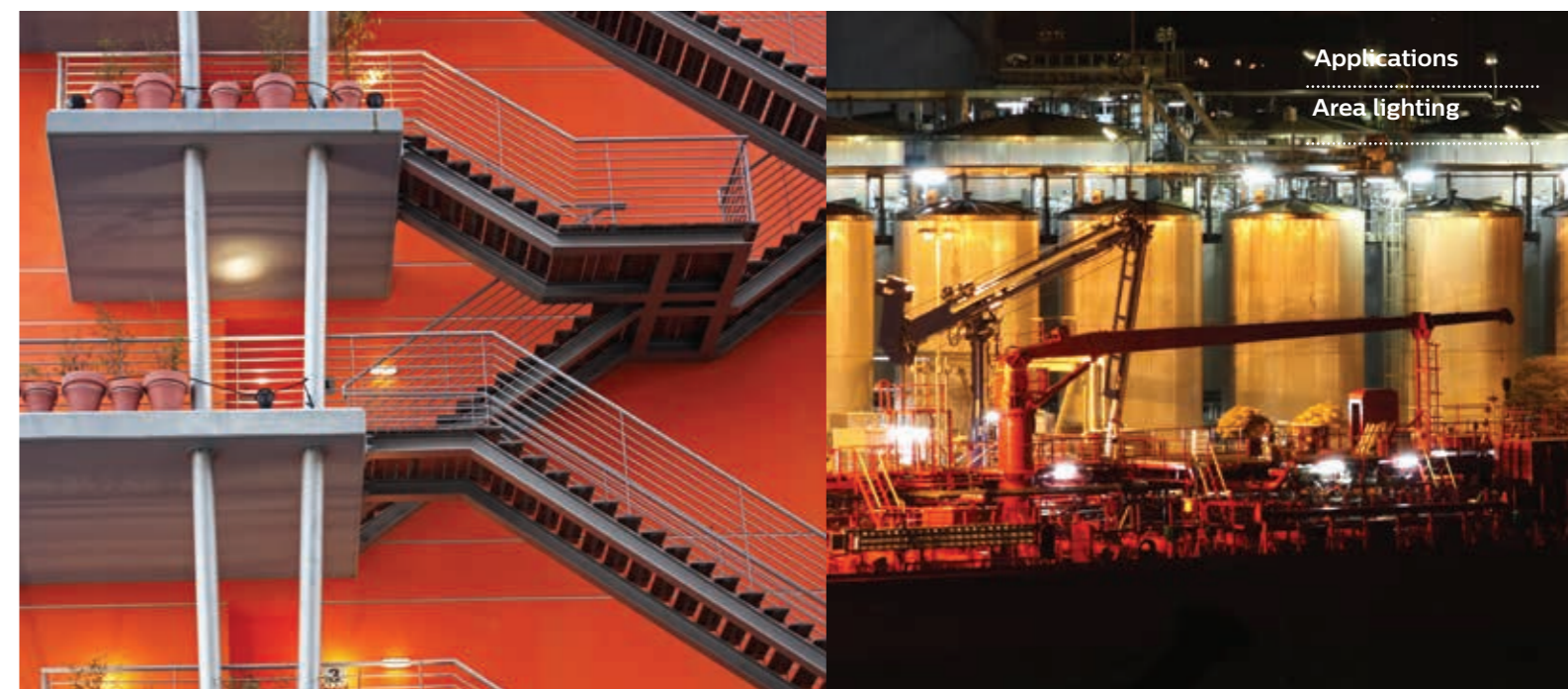
Ideal for rough industry environments. Offers stable and consistent performance

Key features

- Long life of 50000* hours
- Suitable for tough conditions
- Eco friendly
- Versatile solution- can be mounted on ceiling as well as wall

Technical specifications

Type	WT202W LED6S CW PSU S1 PC
System Wattage (W)	9
Lumen Output (lm)	600
System Efficacy (lm/W)	70 (approx)
Color Temperature (K)	6500
CRI	>80
Housing	High pressure die cast aluminium
Cover	Polycarbonate
Mounting	Wall, Ceiling
THD	<20%
PF	>0.9
Operating Voltage	120V-277V





Efficient, Reliable and Robust

Up to 40%* energy savings

Long life

Robust housing

This luminaire is highly efficient. It saves up to 40%* energy.

It has a long life of up to 50000* hours.

Sturdy housing structure helps maximize inherent benefits of LED

Key features

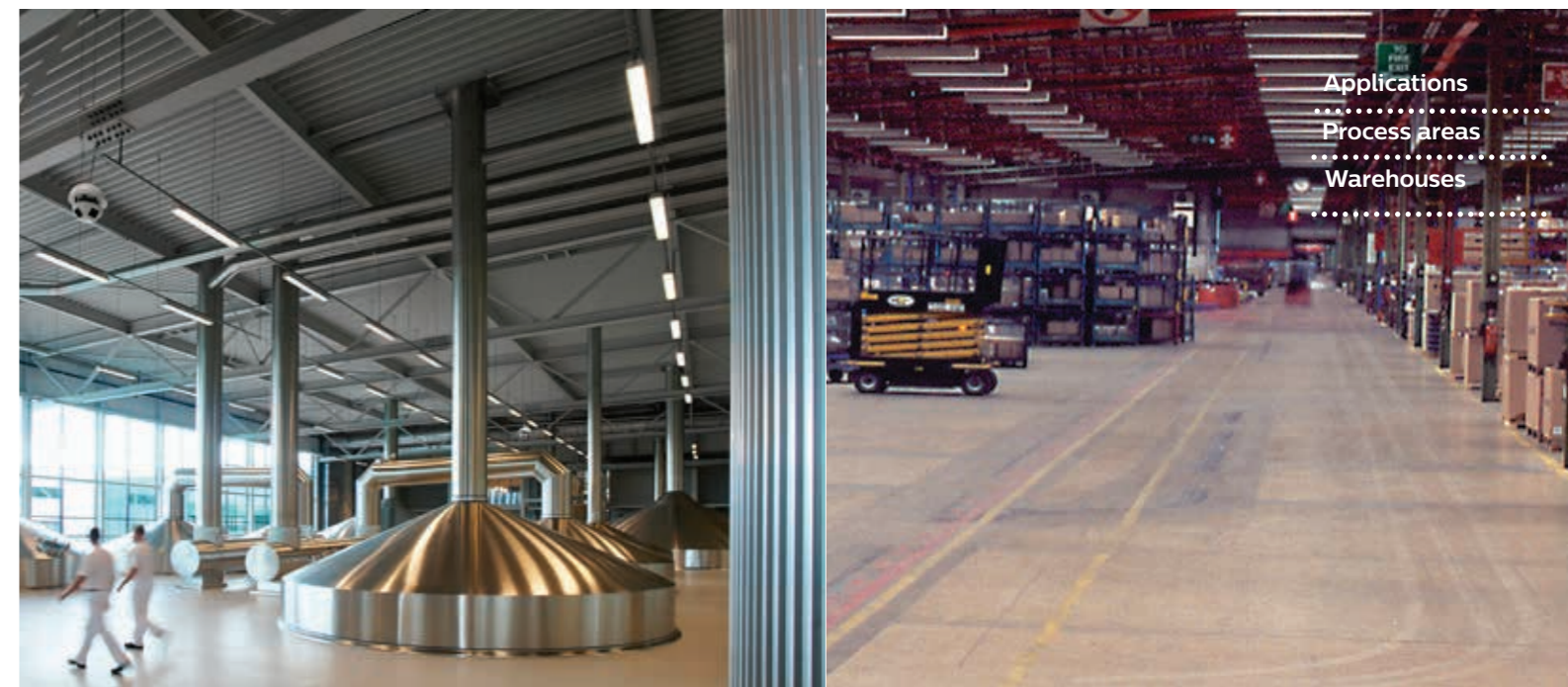
- System efficacy >80 lm/W
- Housing and cover made of virgin polycarbonate
- Installation possible with conduit/ pipe/ surface mounting
- Dedicated optics provide precise symmetric light distribution

Technical specifications

Type	WT550C LED355 CW PSU S1 PC
System Wattage (W)	42
Lumen Output (lm)	3500
System Efficacy (lm/W)	83
Color Temperature (K)	6500
CRI	>80
Housing	Virgin Polycarbonate
Cover	Virgin Polycarbonate
Mounting	Surface/ Suspended
THD	<20%
PF	>0.95
Operating Voltage	140V-270V

EnduraLED Waterproof

EnduraLED Waterproof is a reliable and affordable LED waterproof system that delivers up to 40%* energy savings compared to conventional lighting products. The reliable and robust housing structure helps to maximize inherent LED advantage of energy saving combined with long life.



*Conditions apply



EnduraLED Wellglass

Innovative LED well glass luminaire for direct replacement of 70W HPSV/125 HPMV conventional fixtures. EnduraLED Wellglass has the potential to save >60 %* energy without compromising on lighting parameters.

Efficiency, durability and performance

>60%* energy savings

The luminaire offers high energy savings without compromising on lighting quality

IK 08- Vandal protected front diffuser

Minimises commonly observed glass breakage issues either due to transit or at site

IP 66- Protected against dust for high performance

Ideal for rough industry environments. Offers stable and consistent performance

Key features

- System efficacy of 90 lm/W
- Pressure die cast aluminium housing
- Supplied with adjustable mounting bracket and loop in loop out provision (optional)
- UV stabilized acrylic diffuser

Technical specifications

Type	BY200P LED 27S CW PSU S2 PC	BY200P LED 35S CW PSU S2 PC
System Wattage (W)	29	39
Lumen Output (lm)	2700	3500
System Efficacy (lm/W)	93	90
Color Temperature (K)	4000,6500	6500
CRI	80	80
Housing	High pressure die cast aluminium	High pressure die cast aluminium
Cover	Tempered glass	Tempered glass
Mounting	Dedicated mounting bracket (CRCA)	Dedicated mounting bracket (CRCA)
THD	≤10%	≤10%
PF	>0.95	>0.95
Operating Voltage	160 V AC-280 V AC	160 V AC-280 V AC



*Conditions apply



FullGlow

FullGlow is a beautifully designed luminaire which is bound to delight the occupants with refreshing and comfortable experience through its pure form and glare-free light. It comes in two versions - standard and high efficiency. With up to 50%* energy savings and maintenance free operation, this product is an owner's delight.

Inspiring and efficient

Minimalistic yet bold

Impactful and bold design fits seamlessly within the ceiling.

Improve well being of resources

Higher CRI ensures ideal working conditions promoting people well being.

Flexible, comes in multiple range

This luminaire comes in two versions, standard and high efficiency, offering flexibility for varied application.

Key features

- 50%* energy savings
- High quality light, CRI=80
- No maintenance

Technical specifications

Type	FullGlow (Standard)	FullGlow (High efficiency)
System Wattage (W)	29	38
Lumen Output (lm)	2800	3500
System Efficacy (lm/W)	>90	>90
Color Temperature (K)	4000,6500	4000,6500
CRI	80	80
Housing	Metallic CRCA powder coated	Metallic CRCA powder coated
Cover	Acrylic	Acrylic
Mounting	Recessed	Recessed
THD	<10%	<10%
PF	>0.9	>0.9
Operating Voltage	220-240V , 50 / 60 Hz	220-240V , 50 / 60 Hz





Reliable, efficient and versatile

Day light harvesting and occupancy sensing

The inbuilt intelligence through DALI compatibility enhances the energy saving potential

Direct replacement for Metal halides

The luminaire is one to one replacement for up to MH 250W solution

Multiple mounting options

Multiple mounting possible with special surface KIT, recessed KIT and suspended KIT

Key features

- >50%* energy saving
- Long life of 50000* hours
- Maintenance free
- Eco friendly

Technical specifications

Type	GreenBay Gen II
System Wattage (W)	70, 105, 140
Lumen Output (lm)	7200, 11000, 14500
System Efficacy (lm/W)	>100
Color Temperature (K)	5700
CRI	70
Housing	High pressure die cast aluminium
Cover	Tempered glass
Mounting	Universal with dedicated mounting KITS
THD	<20%
PF	>0.9
Operating Voltage	120V-277V

GreenBay

GreenBay is an integrally designed, versatile lighting solution from Philips to address different lighting requirements within industrial spaces. From under canopies to truss mounted medium bay luminaires, GreenBay can be used across recessed or suspended mounted applications.



- Applications
- Process areas
- Warehouse



Compact and efficient

Compact integral design

With integrated driver, this luminaire is easy to install

High savings

This luminaire offers 50%* savings over CFLs

Highly efficient

GreenLEDi comes with advanced optics for glare free lighting

Key features

- Long life of 50000* hours
- No maintenance
- Eco friendly

Technical specifications

Type	GreenLEDi
System Wattage (W)	600, 900, 1200, 1500, 2000
Lumen Output (lm)	10, 15, 18, 24, 32
System Efficacy (lm/W)	>60
Color Temperature (K)	3000, 4000, 6500
CRI	>70
Housing	Heat sink - die cast
Cover	High quality diffuser
Mounting	Recessed
THD	<20%
PF	>0.9
Operating Voltage	220V-240V/50, 60Hz

GreenLEDi

GreenLEDi range is a breakthrough offering which combines modern product design, the latest LED technology and reliable heat management to deliver a long lasting efficient solution. Offering substantial energy savings compared to CFL/halogen, good light quality, complete stylistic freedom and significant maintenance savings, the product is an ideal value for money and replacement for conventional CFL options.





GreenLED Ultima

Green LED Ultima is a slim downlighter with high lumen efficacy of 100 lm/W. It displays true colors with its high color rendering index of 80 and has a long life of 40000 hours.

Performance in slim design

Slim design

This luminaire adds aesthetic value to the space with its slim design

High savings

It offers 77%* savings over CFLs

Highly efficient

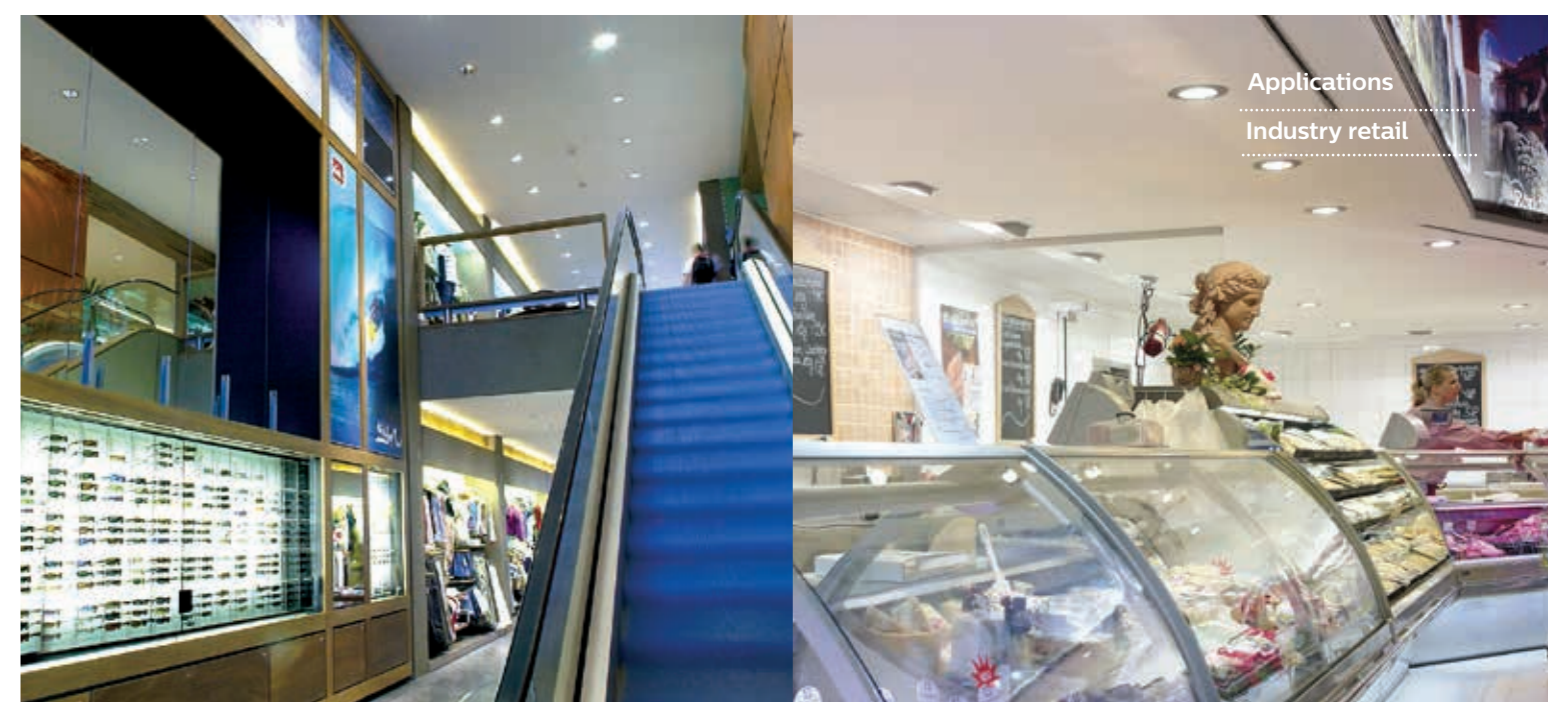
GreenLED Ultima is highly efficient with lumen efficacy of 100 lm/W

Key features

- Long life of 40000* hours
- High quality light, CRI=80
- Eco friendly

Technical specifications

Type	GreenLED Ultima
System Wattage (W)	600, 1000
Lumen Output (lm)	6.5, 10
System Efficacy (lm/W)	100
Color Temperature (K)	3000, 4000, 6500
CRI	>80
Housing	Plastic body, reflector PC, steel clips
Cover	High quality diffuser
Mounting	Recessed
THD	<20%
PF	>0.9
Operating Voltage	220V-240V/50, 60Hz



Applications
Industry retail



GreenPerform Batten

GreenPerform LED batten is an innovative solution for conventional twin lamp battens. It is designed to be a direct replacement for conventional battens providing energy savings of more than 30%* with no compromise on lighting performance. Integrally designed and developed by Philips, this product provides seamless adoption towards industry leading technology.

Affordable and efficient

High system efficacy

The luminaire has high system efficacy of 100 lm/W

Attractive payback

GreenPerform quickly covers its cost in less than 3 years

Eco friendly

The luminaire has no mercury content making it sustainable and green lighting solution

Key features

- 30%* energy saving
- Long life of 50000* hours
- Maintenance free

Technical specifications

Type	BN 208C Gen II
System Wattage (W)	36
Lumen Output (lm)	4200
System Efficacy (lm/W)	115
Color Temperature (K)	4000, 5000, 6500
CRI	>80
Housing	CRCA sheet steel
Cover	Frosted acrylic
Mounting	Mounting bracket extra
THD	<10%
PF	>0.95
Operating Voltage	140V-270V



Applications
 Process areas
 Warehouse



LEDTube

Philips Essential LEDtube integrates LED light source with frosted cover design into traditional linear fluorescent form. It consumes only 20W and offers energy saving up to 50%*.

High return on ROI

High savings

Essential LEDtube offers high energy savings of up to 50%*

Attractive Payback

It offers high ROI and covers Wits cost in 1 year*

Eco friendly

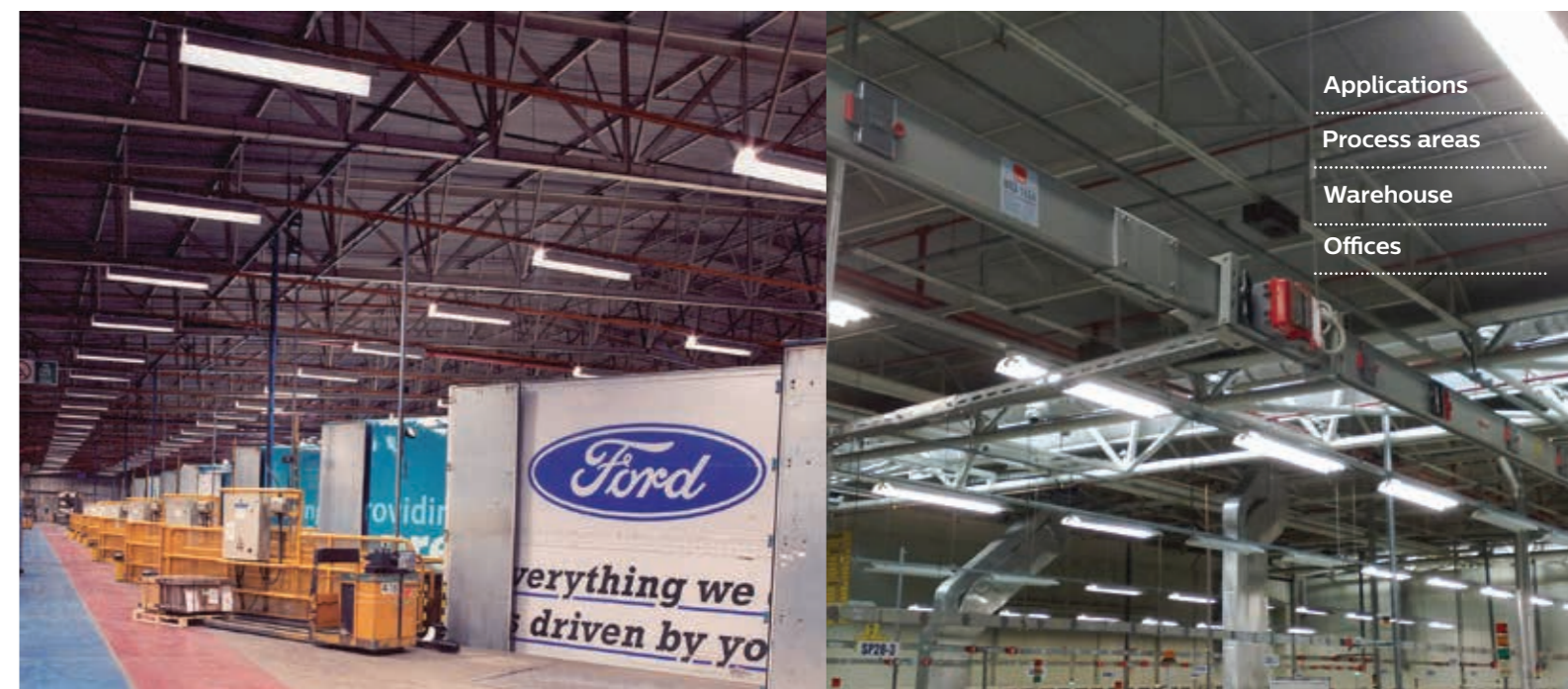
With no mercury content the LEDtube is eco friendly and environment friendly

Key features

- No glare discomfort and uniform light distribution
- No external driver required
- Long life of 30000* hours

Technical specifications

Type	
System Wattage (W)	20
Lumen Output (lm)	1600
System Efficacy (lm/W)	80
Color Temperature (K)	6000K
CRI	80
Housing	Polycarbonate
Cover	Polycarbonate
Mounting	Batten mounted on wall
THD	<20%
PF	>0.95
Operating Voltage	140V-270V



Applications

Process areas

Warehouse

Offices



High efficiency, visual comfort and a stylish design

Highly efficient

The highly energy-efficient LuxSpace makes it possible to achieve extremely low power consumption without sacrificing light quality.

Latest technology

LuxSpace features the latest LED technology and delivers reliable light output, stable color performance and high color rendering (Ra = 80).

Fit and forget

All LuxSpace models offer a compact look and feel and a perfect fit with easy installation, with a long lifetime of 50,000 hours.

Key features

- Highly efficient, efficacy >90 lm/W
- Compact look and feel
- Premium material and finish

Technical specifications

Type	BBS478, BBS488/489, BBS498/499, BBS496
System Wattage (W)	8, 13, 28, 40.5
Lumen Output (lm)	600, 1000, 1500, 2000, 3000
System Efficacy (lm/W)	>90
Color Temperature (K)	3000, 4000
CRI	>80
Housing	Steel and polycarbonate
Cover	Option of various attachments
Mounting	Recessed
THD	<20%
PF	>0.9
Operating Voltage	220V-240V/50, 60Hz

LuxSpace

LuxSpace provides the perfect combination of efficiency, light comfort and design, without compromising on lighting performance. It offers a wide choice of options for creating the desired ambience.





MaXolid

MaXolid highbay is an intelligent, direct HID highbay replacement which saves 50%* energy vs. conventional industrial highbay. The inbuilt intelligence through DALI compatibility enhances the energy saving potential as a result of daylight harvesting and occupancy sensing.

Combining the best features like instant start, long life, controllability and high efficiency, Maxolid provides significant and sustained energy savings over the product life cycle.

Inbuilt intelligence for higher returns

Day light harvesting and occupancy sensing

The inbuilt intelligence through DALI compatibility enhances the energy saving potential

Direct replacement

MaXolid highbay is an intelligent direct HID replacement which saves 50%* energy.

High system efficacy

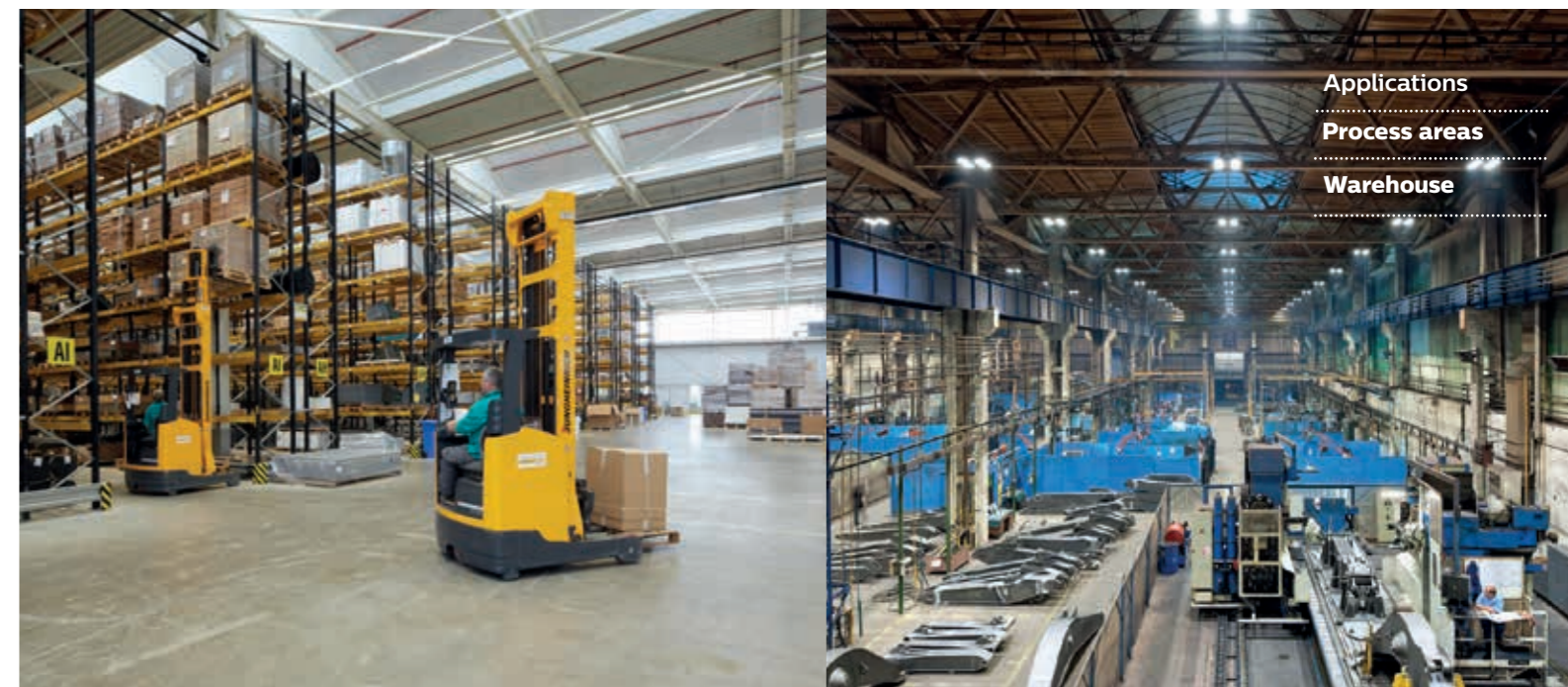
With efficacy of more than 100 lm/W, the luminaire is highly efficient

Key features

- System efficacy >100 lm/W
- Luminaire housing made of high pressure die cast aluminium
- Installation possible with hook or threaded rod
- Dedicated optics provide precise symmetric light distribution

Technical specifications

Type	BY688P
System Wattage (W)	137
Lumen Output (lm)	14500
System Efficacy (lm/W)	105
Color Temperature (K)	6500
CRI	>80
Housing	High pressure die cast aluminium
Cover	Tempered glass
Mounting	Factory fitted eye bolt
THD	<20%
PF	>0.95
Operating Voltage	120V-277V





Modern and contemporary

Volumetric light

With its uplighting feature and advanced technology, Stratus provides uniform lighting throughout the space, resulting in a better balance of luminance through the visual field.

Sleek aesthetic

Minimalistic design with sleek aesthetics, that blends easily with interiors and enhances the appeal of your spaces without compromising on light output.

Continuous mounting

Continuous end to end mounting arrangements help in providing uniform lighting across the room or spaces.

Key features

- Saves up to 30%* energy
- Long life of 50000* hours
- High quality light, CRI=80

Technical specifications

Type	Stratus
System Wattage (W)	54
Lumen Output (lm)	4400
System Efficacy (lm/W)	>80
Color Temperature (K)	4000, 5000
CRI	>80
Housing	Extruded aluminium
Cover	High efficiency opal diffuser
Mounting	Suspended
THD	<20%
PF	>0.9
Operating Voltage	220V-240V/50, 60Hz

Stratus

Stratus is a sleek, suspended up-down LED lighting luminaire which seamlessly blends with office interiors. Up-down lighting can be easily controlled individually and in conjunction. Additional features include linear cascading, which ensures elegant and continuous line of light.





Compact and robust

Compact

Incorporates LED light sources, optical system, heat sink and drivers into one compact housing

Long life

Efficient heat sink ensures long luminaire life

High system efficacy

With efficacy of more than 100 lm/W, the luminaire is highly efficient

Key features

- Consistent light output
- Wall, ceiling and surface mounting with various adjustment
- Low maintenance
- Eco friendly

Technical specifications

Type	BVP410
System Wattage (W)	105, 120, 140, 172, 210, 240
Lumen Output (lm)	10700, 12500, 14400, 17200, 21000, 24000
System Efficacy (lm/W)	>100
Color Temperature (K)	5700
CRI	>70
Housing	High pressure die cast aluminium
Cover	Glass
Mounting	Wall
THD	<20%
PF	>0.90
Operating Voltage	240V AC, 50 Hz

Tempo LED

Philips Tempo LED is a general purpose LED flood lighting luminaire for various lighting applications, such as area lighting, sports lighting, bill board, facade, industry area, security lighting and other general applications. The Tempo LED flood light incorporates LED light sources, optical system, heat sink and drivers into one compact housing which ensures that LED's have a long life. Tempo LED takes advantage of the LED technology which provides energy savings and a longer lifetime, bringing area lighting into a new era.



Applications

Area lighting



Uniflood

Philips Uniflood is an integral flood light with driver inside a PDC housing. It is highly efficient, reliable and sturdy compared to similar metal halide floodlights.

It delivers significant energy savings compared to conventional floodlights. The luminaire comes with a choice of lumen pack to suit various applications with different beam, as well as a universal mounting bracket for easy angle adjustment.

More Brightness. More Savings

High savings

This luminaire is equivalent of 80W ordinary LED floodlight, delivering more than 50%* savings

Longer life

With uniform heat distribution, the life of the luminaire is enhanced

Higher lighting levels

Uniflood uses advanced optics which ensures optimum lighting levels.

Key features

- High lumen efficacy, 90lm/W
- IP66 - protection against dust and water
- Zero maintenance

Technical specifications

Type	BVP410
System Wattage (W)	35,60
Lumen Output (lm)	3500,7000
System Efficacy (lm/W)	>100
Color Temperature (K)	5700
CRI	>70
Housing	High pressure die cast aluminium
Cover	Glass
Mounting	Bracket
THD	<20%
PF	>0.90
Operating Voltage	240V AC, 50 Hz





GreenLine Xtra

Maintenance free LED luminaire with urban looks for city roads offering best in class energy savings. Existing luminaires can be easily upgraded to new LED technology with minimum changes in present installation.

Build to last, designed to save

Long life

GreenLine Xtra offers long life of up to 10 years*

Uniform lighting levels

The luminaire lits every corner of the road in a uniform way making people feel safe during the late hours

Dust and waterproof protection

With IP65 rating, GreenLine Xtra is ideal for tough weather conditions

Key features

- Upto 50%* energy saving
- Options of cover glass and polycarbonate cover
- Meets IS1944 lighting requirement for A1/ A2 category road
- Complies to IEC60598 and IS10322

Technical specifications

Type	BRP322 S3	BRP322 S3	BRP322 S3	BRP322 S3
System Wattage (W)	106	121	140	175
Lumen Output (lm)	10000-11000	11700-12800	14000-14700	17200-17700
System Efficacy (lm/W)	up to 100	up to 100	up to 100	up to 100
Color Temperature (K)	5000	5000	5000	5000
CRI	70	70	70	70
Housing	High pressure die cast aluminium	High pressure die cast aluminium	High pressure die cast aluminium	High pressure die cast aluminium
Cover	Polycarbonate HT glass cover	Polycarbonate HT glass cover	Polycarbonate HT glass cover	Poly carbonate HT Glass cover
Mounting	Pole mounted	Pole mounted	Pole mounted	Pole mounted
THD	<20	<20	<20	<20
PF	0.90	0.90	0.90	0.90
Operating Voltage	120-270V	120-270V	120-270V	120-270V



Applications

Roads



Solar street lighting range

Solar powered outdoor lighting products are ideal for lighting the area in remote locations where the electricity is unavailable or erratic. Even in urban areas, these find great usage to reduce dependency on conventional power and contribute towards green energy. Reliable and long life makes this solution effective in fulfilling our present and future lighting requirements.

Efficient and environment friendly

No running cost

This luminaire runs with natural source of energy, hence there is no electricity cost.

IP65 protection

The luminaire lits every corner of the road in a uniform way making people feel safe during the late hours

Green solution

Runs 100% on solar energy.

Key features

- No line voltage, trenching and metering
- No power outages
- Battery backup for cloudy and rainy days
- Easy to install

Technical specifications

Type	BRP403, BRP402, BRP 020, BRP202
System Wattage (W)	8W, 12W, 15W, 20W, 21W, 28W, 43W
Lumen Output (lm)	80-4300
System Efficacy (lm/W)	100
Color Temperature (K)	6500
CRI	70
Housing	High pressure die cast aluminium
Cover	Polycarbonate HT glass cover
Mounting	Pole mounted
THD	<20%
PF	>0.90
Operating Voltage	1220V-240V

