



PHILIPS

Professional Lighting

LED Catalog

Bring
your vision
to light

Transform your space with lighting

Light has a major impact on our wellbeing, moods and emotions. It inspires, attracts, communicates, sets the scene and enhances productivity and comfort in office.

Each year, we at Philips invest heavily in research to gather end-user insights, further deepening our understanding of people's needs, desires and aspirations. Combining these insights with our technological leadership, we are able to deliver meaningful innovations, advanced energy efficient products and systems that are designed around people and are very easy to experience.



Indoor commercial

Pg 12



Indoor industrial

Pg 48



Public lighting

Pg 66



LED lamps

Pg 108



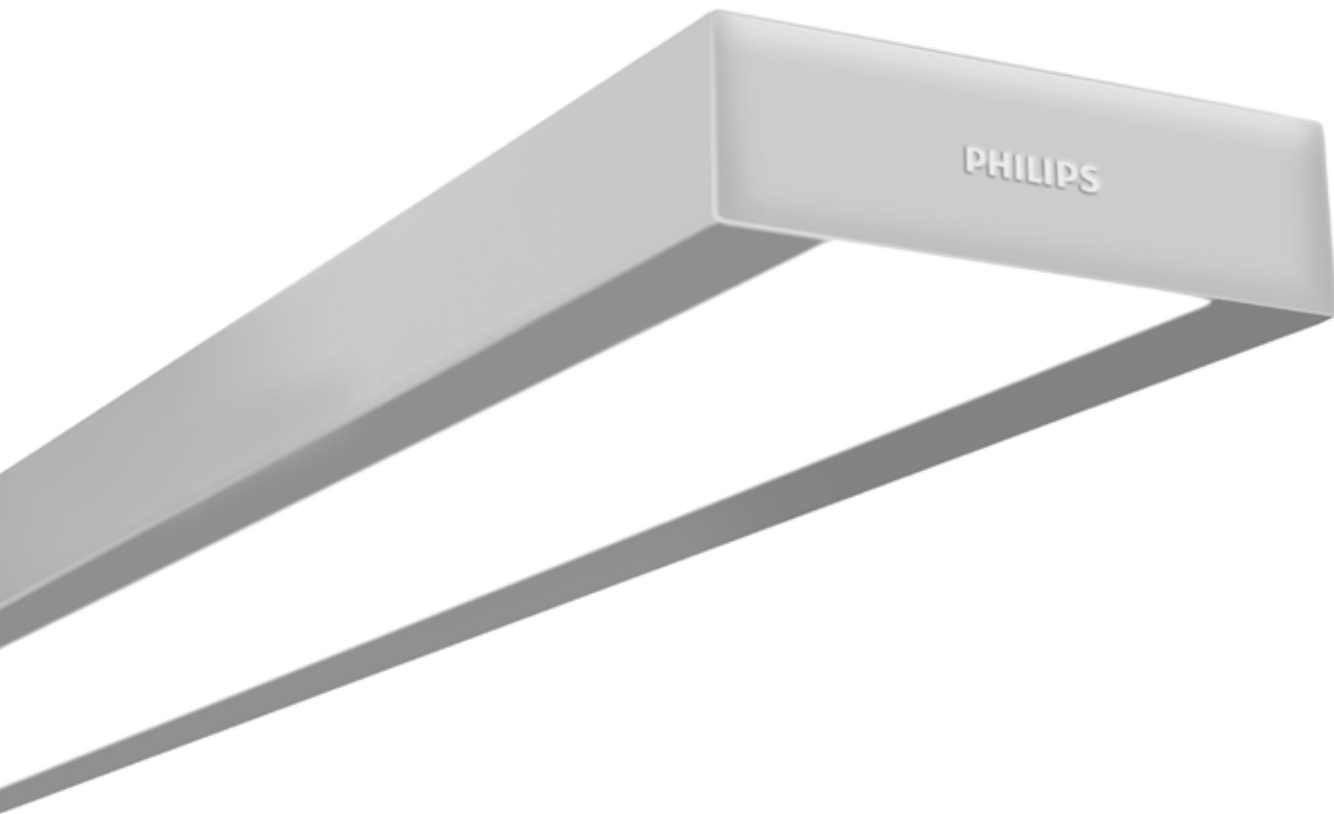
Controls

Pg 114

Indoor Commercial

Table of Contents

Product	Pg
PureLine	14
Chopstick	16
Sereno	18
LineLight	20
PowerBalance	22
Dayline	24
SmartGlow	26
FullGlow Gen 2	28
GreenSquare	30
Cirrus	32
Cirrus Mini Pro	34
GreenLEDi	36
GreenPerform	38
GreenLED Ultima	40
GreenSpot	42
GreenLED Surface	44
EcoAccent	46



PureLine

The PureLine family of luminaires gives you compromise-free office illumination. It offers both general and office area lighting in identical enclosures. The range brings together high-flux lighting with a homogeneous optical system without making any concessions on energy efficiency design.

Office luminaire that does it all

One look, many applications

These stylish luminaires give you all the benefits of LED lighting in an enclosure that lets you apply the same luminaire format in cell offices, open plan offices, meeting rooms and the reception area.

Designed to perform

With its long product lifetime and a good energy-to-light ratio of up to >100 lm/W, the range is a good choice for long-term savings. And with a light output that ranges from 3400 lm to 7800 lm, you can always find the best configuration for all the areas in your building.

A recipe for success

PureLine is the future-proof luminaire that does it all. And to easily get more control of the light, PureLine offers luminaires with built-in ActiLume sensors. This lets you optimize visual comfort, enable daylight harvesting, detect motion in a room and maximize energy savings.

Key features

- System efficacy >100 Lm/W
- New light platform & optical design reduce 20% glare
- High quality light, CRI=80

Technical specifications

Type	Suspended Standalone		Suspended Continuous	
System Wattage (W)	37	32	37	32
IP Rating	IP20		IP20	
Lumen Output (lm)	3900	3400	3900	3300
System Efficacy (lm/W)	105		103	
Color Temperature (K)	4000, 6500		4000, 6500	
CRI	80		80	
Housing	High quality extruded aluminum		High quality extruded aluminum	
Cover	High efficiency diffuser		High efficiency diffuser	
Mounting	Suspended		Suspended	
THD	<10%		<10%	
PF	>0.9		>0.9	
Operating Voltage	140-270V		140-270V	



Applications

Open office



Key features

- Wide-spread lighting distribution
- Efficacy up to 108 lm/W
- Available in 4 ft and 8 ft modules

Technical specifications

Type	Chopstick	
System Wattage (W)	43	32.5
IP rating	IP20	
Lumen Output (lm)	4800	3600
System Efficacy (lm/W)	110	
Color Temperature (K)	6500	
CRI	80	
Housing	Metallic CRCA powder coated	
Cover	High efficiency diffuser	
Mounting	Suspended, Wall	
THD	<10	
PF	>0.9	
Operating Voltage	220-240V, 50/60 Hz	

Chopstick

Chopstick offers small size with big lighting performance and a price point that makes it ideal to use in many different types of spaces.

Balance of light, form and materials

Architects delight

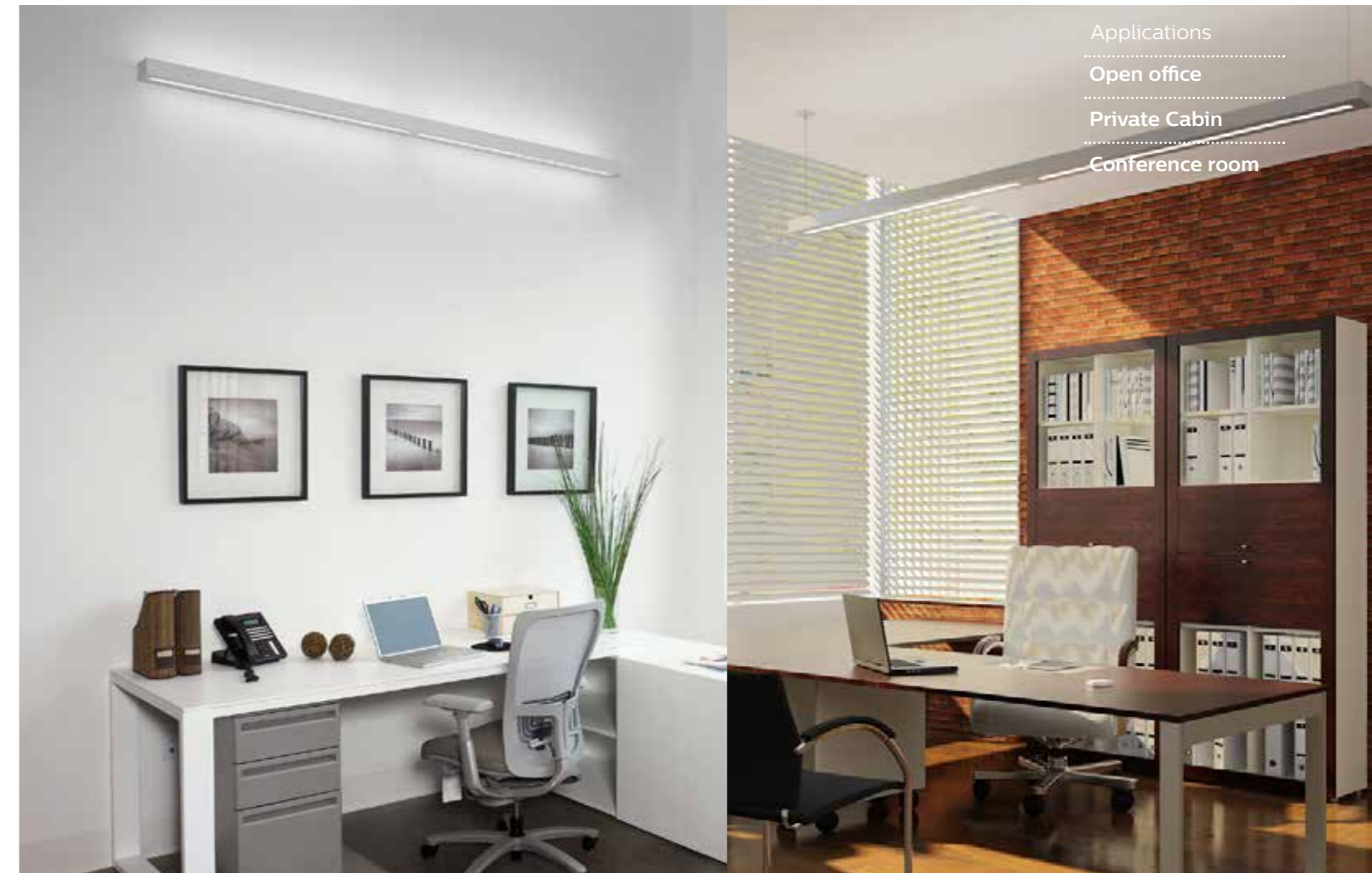
Sleek minimalistic design providing more uniform luminous environments with optimal energy efficiency.

Super efficient

Chopstick provides superior efficacy of 110 lm/W.

Perfect distribution

Chopstick LED offers a semi-indirect lighting distribution ideal for open environments and smaller private spaces. High efficacy and high peak zenith distribution results in the ability to spread distance between fixtures.



- Applications
- Open office
 - Private Cabin
 - Conference room



Sereno

Philips Sereno, a range of office luminaires with a wide range of optics specially designed to meet the highest standard of work place lighting. Sereno luminaires offer the latest technology for high comfort and optical efficiency in a miniature profile. Sereno is available in surface/ suspended and wall mounted versions in a variety of dedicated optics such as D8 Mirrors, Opal diffuser and indirect optics. Sereno offers the best combination of performance, energy efficiency, aesthetics and flexibility of designing.

Balance of light, form and materials

Office standard compliant

Sleek minimalistic design providing more uniform luminous environments with optimal energy efficiency.

Best in class LPD

With high Light Power Density, this luminaire provides high levels of energy efficiency.

Superior visual comfort

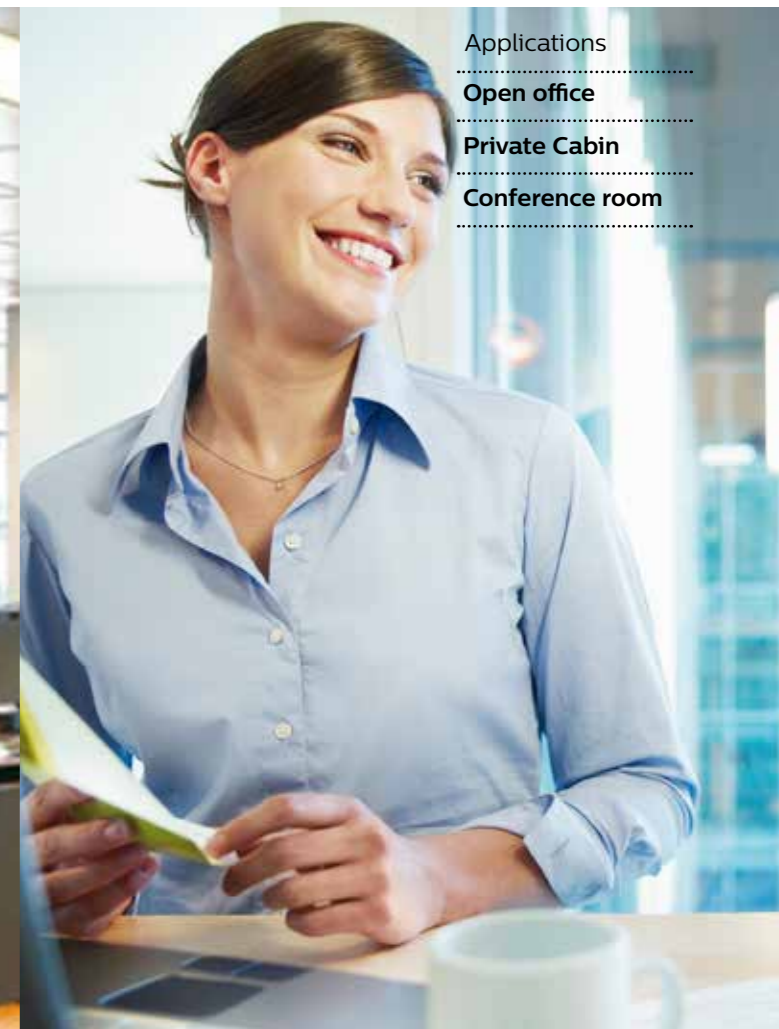
This luminaire helps increase productivity with its superior visual comfort lighting.

Key features

- Energy efficient
- Ultra flat light with only 47 mm in height
- Maintenance friendly

Technical specifications

Type	Sereno
System Wattage (W)	28
IP Rating	IP20
Lumen Output (lm)	3000
System Efficacy (lm/W)	>105
Color Temperature (K)	4000, 5000
CRI	80
Housing	Extruded aluminum housing
Cover	High efficiency diffuser
Mounting	Suspended
THD	<10
PF	>0.9
Operating Voltage	220-240V, 50/60 Hz



Applications

Open office

Private Cabin

Conference room



LineLight

LineLight lighting solution is linear lighting solution suitable for use in variety of indoor applications. It's sleek design, elegant looks complement any interior architecture and visual effect. LineLight offers unique flexibility of continuous mounting or standalone mounting in lengths of 4ft and 8ft.

Sleek and elegant

Continuous mounting

Extruded aluminium housing for continuous mounting ensures no sagging.

Driving performance beyond the edge

LineLight delivers high performance and a quality light output.

Perfect distribution curve

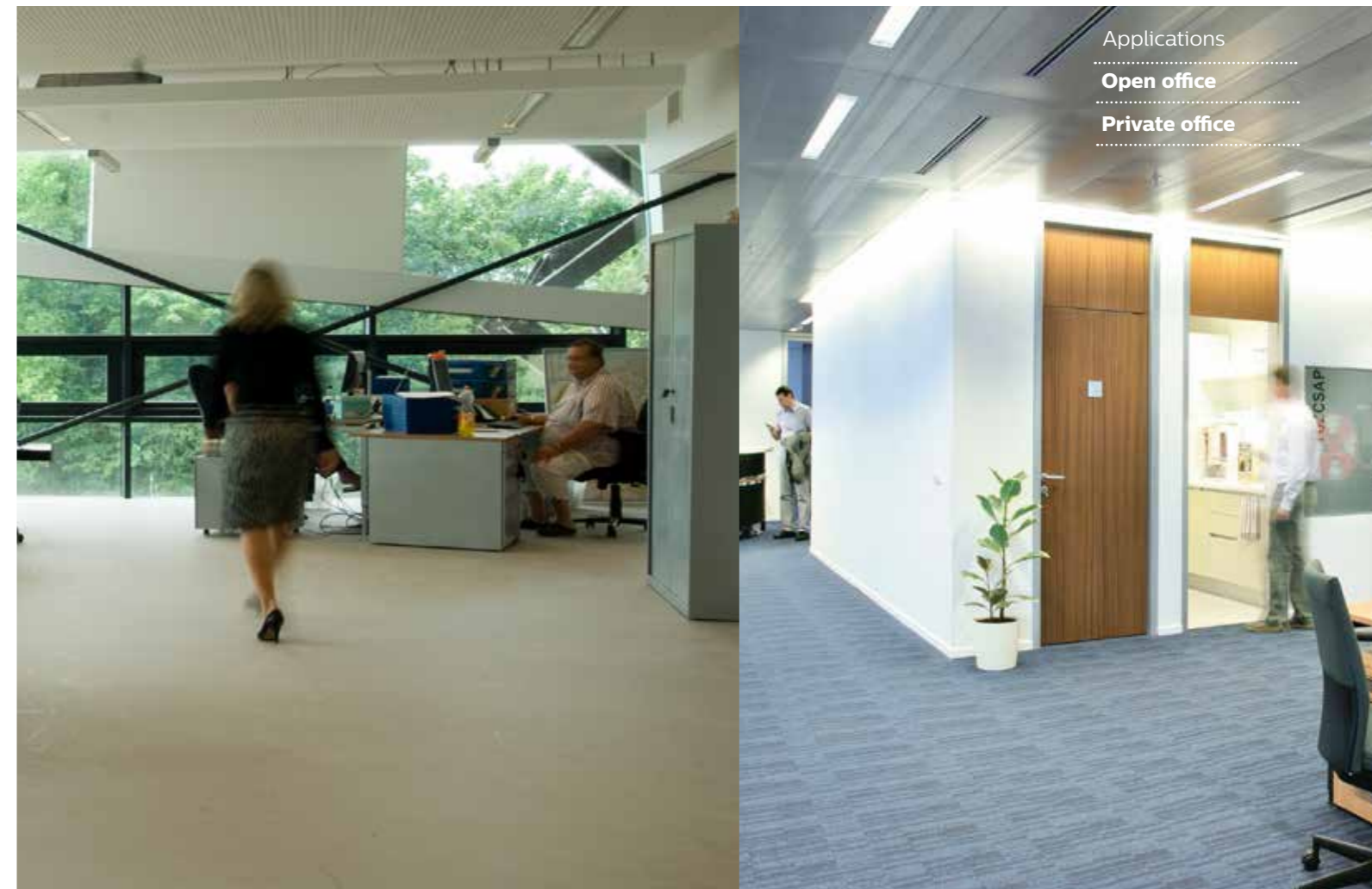
LineLight offers unparalleled distribution & brightness to create a balanced luminous environment, with smooth & even gradients of light throughout the space.

Key features

- Comes in 4 ft and 8 ft modules
- Maintenance free
- Eco-friendly

Technical specifications

Type	RC 311
System Wattage (W)	28
IP Rating	IP20
Lumen Output (lm)	2200
System Efficacy (lm/W)	80
Color Temperature (K)	4000, 6500
CRI	80
Housing	White/ Grey
Cover	High efficiency diffuser
Mounting	Recessed
THD	<10
PF	>0.9
Operating Voltage	170–270V





PowerBalance

PowerBalance is Philips' most energy-efficient office specification compliant LED luminaire. It more than halves energy costs compared to a high efficiency T5 solution, and the LED system has a longer lifetime. This results in significantly lower operational costs, ensuring a payback that meets the needs of the specification market.

Best in class visual comfort

Smart pyramid optics - UGR<19

The luminaire offers low direct glare which results in enhanced visual comfort.

Low indirect glare

The luminaire provides luminance below the angle of 65°, thereby reducing indirect glare in an office environment.

High color rendering

With CRI >80, the luminaire renders color naturally and makes people comfortable.

Key features

- Highly efficient, efficacy >90 lm/W
- Compact look and feel
- Premium material and finish

Technical specifications

Type	RC360B
System Wattage (W)	29.5
IP Rating	IP20
Lumen Output (lm)	3400
System Efficacy (lm/W)	115
Color Temperature (K)	4000
CRI	80
Housing	Powder coated steel
Cover	High efficiency diffuser
Mounting	Recessed
THD	<10
PF	>0.9
Operating Voltage	220-240V, 50/60 Hz



Applications

Open office

Meeting room



Dayline

Dayline is an efficient luminaire which saves up to 65%* energy as compared to 2 x PLL 36W luminaire. It ensures long, maintenance free life and comes with DALI dimming options. Dayline is a perfect combination of innovative design and efficient LED technology.

Efficient lighting. More Savings

High energy savings

Dayline offers high energy savings up to 65%*.

High lumen efficacy

With efficacy of up to 100 lm/W, the luminaire is highly efficient.

Maintenance friendly

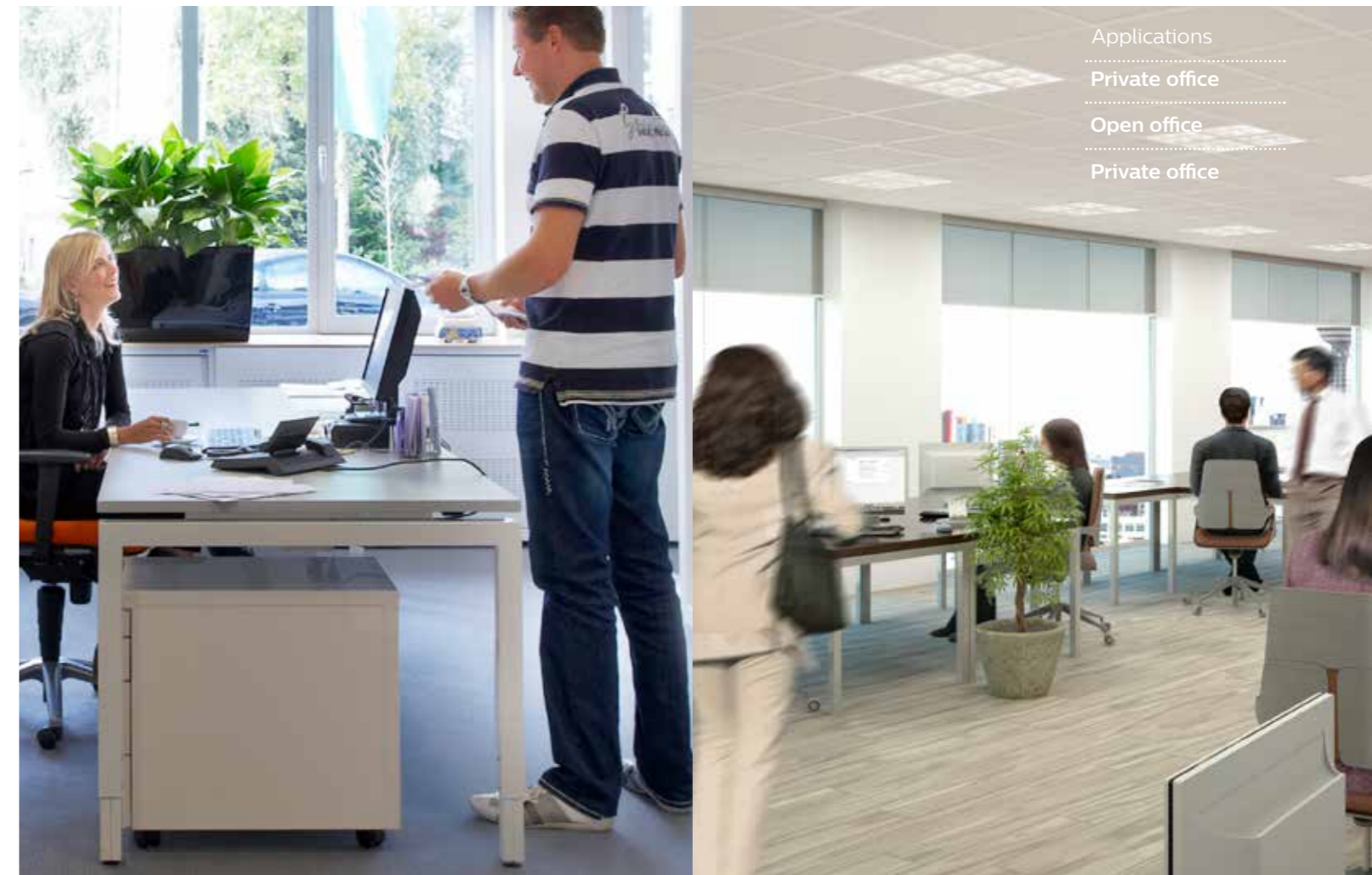
With Dayline, operational costs are reduced as it requires no maintenance.

Key features

- High quality light, CRI=80
- Long life of up to 50,000 hours
- Soft opal diffuser provides high visual comfort
- Eco-friendly

Technical specifications

Type	RC240B LED
System Wattage (W)	34
IP Rating	IP20
Lumen Output (lm)	3400
System Efficacy (lm/W)	100
Color Temperature (K)	4000, 5000, 6500
CRI	80
Housing	Polyester power coated
Cover	High efficiency diffuser
Mounting	Recessed
THD	<10%
PF	>0.9
Operating Voltage	220-240V, 50/60 Hz



- Applications
- Private office
 - Open office
 - Private office



SmartGlow

SmartGlow is an intelligent office lighting system with an inbuilt sensor thus avoids unwanted hassle of creating space for sensors. The inbuilt sensor helps save additional 40%* energy as compared to other LED panels. The luminaire also provide 360° coverage around 8 ft area.

High on aesthetics, SmartGlow delivers superior performance, is easy to install and has a long life of 50000 hours. It also has very good payback period of less than 1.5 years.

Intelligent office lighting system

Occupancy Sensor

Automatically detects presence, switches on when office is occupied and turned off when vacated.

Volumetric distribution

This luminaire works at 8ft sensor height and covers 360 degree area

40% additional savings

The inbuilt occupancy sensor automatically regulates lighting as per the presence detected which helps save up to additional 40% energy.

Key features

- Payback of <1.5 years*
- High efficacy, 100 lm/W
- Long life, 50k burning hours

Technical specifications

Type	RC383B	
System Wattage (W)	28	37
IP Rating	IP 20	
Lumen Output (lm)	2850	3650
System Efficacy (lm/W)	100	
Color Temperature (K)	4000, 6500	
CRI	80	
Housing	CRCA	
Cover	High efficiency diffuser	
Mounting	Recessed	
THD	<10%	
PF	>0.9	
Operating Voltage	220-240V, 50/60 Hz	





FullGlow

FullGlow is a beautifully designed luminaire which is bound to delight the occupants with refreshing and comfortable experience through its pure form and glare-free light. It comes in two versions - standard and high efficiency. With up to 50%* energy savings and maintenance free operation, this product is an owner's delight.

Inspiring and efficient

Very high efficacy

Efficacy of >95 lm/watt ensures maximum savings.

Tailored to suit different needs

This luminaire comes in two versions, standard and high efficiency, offering flexibility for varied applications.

EMC & EMI compliant drivers

EMC ensures that operation does not influence the electromagnetic environment to the extent that the functions of other devices and systems are adversely affected.

Key features

- 50%* energy savings
- High quality light, CRI=80
- No maintenance

Technical specifications

Type	RC380 HE	RC380 HE	RC380 G3 LL	RC380 G3 HL
System Wattage (W)	30	39	27	32
IP Rating	IP20	IP20	IP20	IP20
Lumen Output (lm)	3000	3400	2900	3400
System Efficacy (lm/W)	100	87	110	110
Color Temperature (K)	4000, 6500	4000, 6500	4000, 6500	4000, 6500
CRI	80	80	80	80
Housing	Metallic CRCA powder coated	Metallic CRCA powder coated	Metallic CRCA powder coated	Metallic CRCA powder coated
Cover	High efficiency diffuser	High efficiency diffuser	High efficiency diffuser	High efficiency diffuser
Mounting	Recessed	Recessed	Recessed	Recessed
THD	<10%	<10%	<10%	<10%
PF	>0.9	>0.9	>0.9	>0.9
Operating Voltage	220-240V, 50/60 Hz	220-240V, 50/60 Hz	220-240V, 50/60 Hz	220-240V, 50/60 Hz



Applications

Open office



GreenSquare

GreenSquare provides an optimum visual environment for office work. It provides the right light levels to see printed, handwritten or on-screen documents clearly, without causing glare and fatigue. By providing uniform illumination and having no significant light depreciation over time, GreenSquare ensures enhanced productivity in your office for years together with a refreshing and comforting experience.

Affordable and reliable

Attractive payback period

GreenSquare recovers its cost in a very short period. Overall TCO is low.

Easy to install

It replaces conventional 2x2 luminaires with ease as no separate structure/renovation in ceiling is required.

Elegant ceiling look

GreenSquare give the ceiling an aesthetically enhanced look.

Key features

- 40%* energy saving
- Maintenance free
- Long life of 40000 hours*

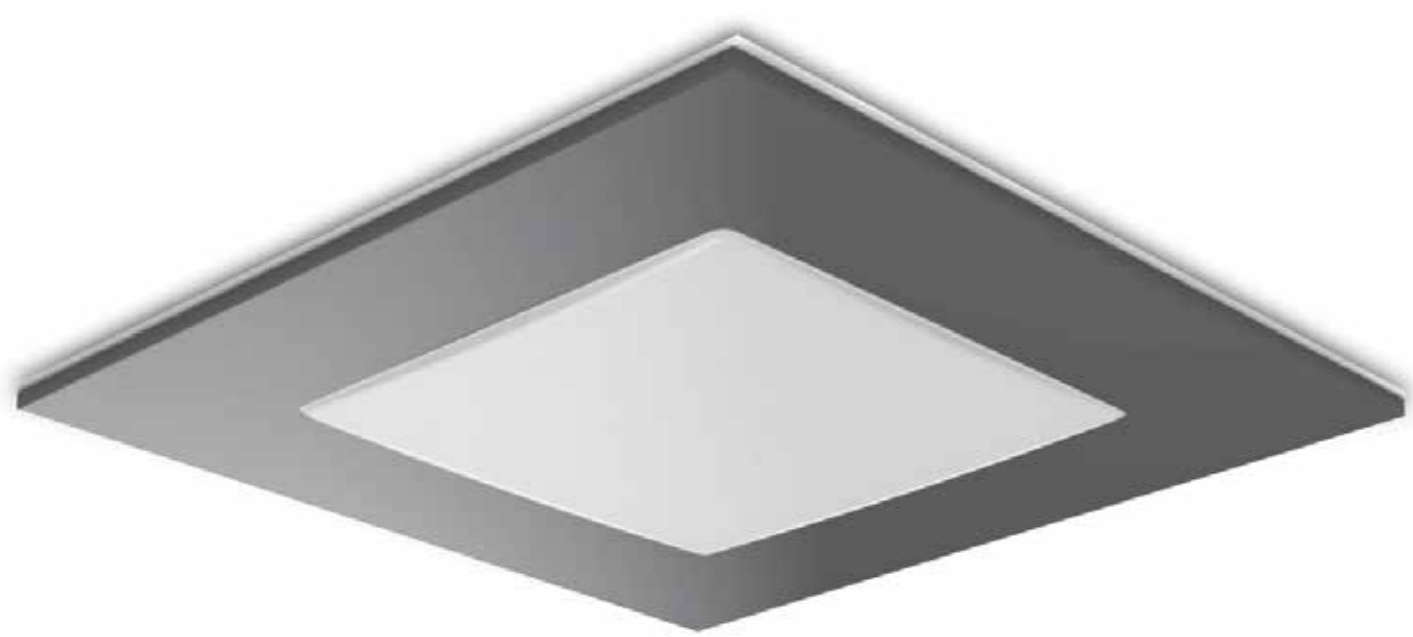
Technical specifications

Type	RC140
System Wattage (W)	33
IP Rating	IP20
Lumen Output (lm)	3100
System Efficacy (lm/W)	75
Color Temperature (K)	4000, 6500
CRI	80
Housing	Metallic CRCA powder coated
Cover	High efficiency diffuser
Mounting	Recessed
THD	<10%
PF	>0.9
Operating Voltage	220-240V, 50/60 Hz



Applications

Open office



Cirrus

Cirrus is an office general lighting solution which offers excellent energy saving and maintenance-free operation. This luminaire has a slim design which is suitable for recessed mounted application for office spaces. Powered by a long-lasting LED light source and high efficiency optical system, this luminaire offers uniform and uninterrupted lighting.

Efficient and quality lighting

Higher visual comfort

Highly efficient optical system delivers superior visual comfort.

Improved vertical illumination

Enables comfortable working environment.

High energy saving

With long lasting LED light source, the luminaire delivers high energy savings.

Key features

- Consistent light output
- Long life
- CRI=80

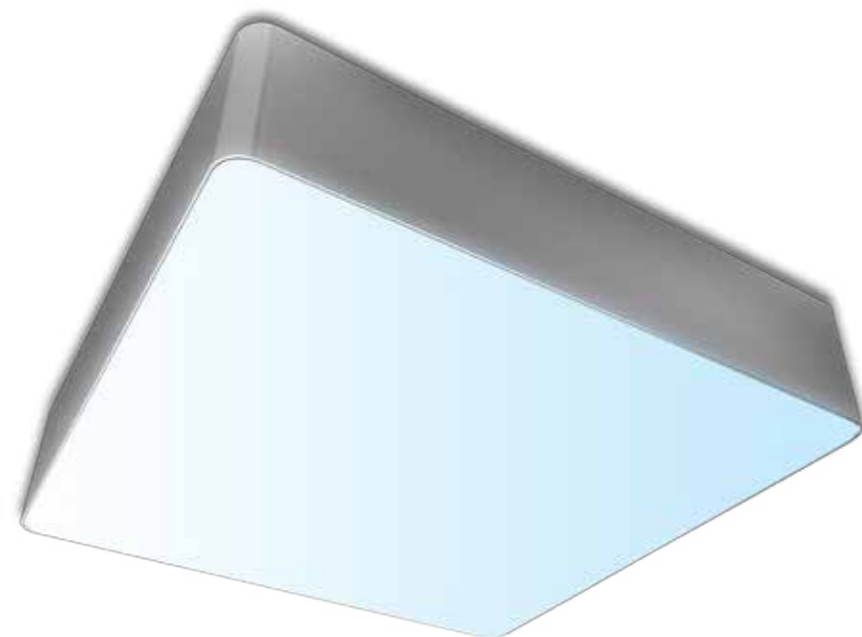
Technical specifications

Type	RC/SM 365/366
System Wattage (W)	38
IP Rating	IP20
Lumen Output (lm)	3300
System Efficacy (lm/W)	90
Color Temperature (K)	4000, 5000, 6500
CRI	80
Housing	Metallic CRCA powder coated
Cover	High efficiency diffuser
Mounting	Recessed/Surface
THD	<10%
PF	>0.9
Operating Voltage	220-240V, 50/60 Hz



Applications

Office



Cirrus Mini Pro

A square ceiling mounted LED luminaire suitable for replacing any 2x18W CFL and 2x26W conventional down light. This product comes in two options -1100 lumens and 1600 lumens, covering a wide range of applications. Providing high energy savings (> 50%*) and up to 5 times more life compared to conventional luminaires, Cirrus Mini offers better aesthetics, comes in two body colors and two color temperatures - NW/CW.

Efficient light. More savings.

Attractive payback

Effective replacement for conventional CFL luminaires results in significant saving and reduced operational costs.

Good light quality

Highly efficient optical system ensures an effective low glare lighting.

Easy installation

Compact product which is easy to mount and install.

Key features

- Consistent light output
- Long life
- CRI=80

Technical specifications

Type	SM200C	
System Wattage (W)	12	20
IP Rating	IP20	
Lumen Output (lm)	1100	1600
System Efficacy (lm/W)	>60	
Color Temperature (K)	4000, 6500	
CRI	80	
Housing	Metallic CRCA powder coated	
Cover	High efficiency diffuser	
Mounting	Surface	
THD	<10%	
PF	>0.9	
Operating Voltage	140 - 270V, 50/60 Hz	





GreenLEDi

GreenLEDi range is a break through offering which combines modern product design, the latest LED technology and reliable heat management to deliver a long lasting efficient solution. Offering substantial energy savings compared to CFL/halogen, good light quality, complete stylistic freedom and significant maintenance savings, the product is an ideal value for money and replacement for conventional CFL options.

Compact and efficient

Compact integral design

With integrated driver, this luminaire is easy to install.

High savings

This luminaire offers 50%* savings over CFLs.

Highly efficient

GreenLEDi comes with advanced optics for glare free lighting.

Key features

- Long life of 30000* hours
- No maintenance
- Eco friendly

Technical specifications

Type	GreenLEDi				
System Wattage (W)	7	10	13	15	18
IP Rating	IP20				
Lumen Output (lm)	600	1000	1300	1500	2000
System Efficacy (lm/W)	>85				
Color Temperature (K)	3000, 4000, 6500				
CRI	>80				
Housing	Heat sink - die cast				
Cover	High quality diffuser				
Mounting	Recessed				
THD	<10%				
PF	>0.9				
Operating Voltage	220V-240V/50, 60Hz				



Applications

Reception

Conference room

Retail stores



GreenPerform

GreenPerform is an innovative lighting solution which offers a wide range of dimming options for workplaces. The product has options in all variants and all types of dimming solutions like Phase -Cut, Analog and DALI. It offers inherent benefits of LED products such as high energy saving of up to 50%* and up to 5 times more life. The range is available from 600 lumens to 2000 lumens making it an efficient and high performance option.

Performance and advanced controls

Exhaustive range with dimming both analog and phase cut

The range of products offer varied dimming solutions like Analog, Phase-cut and DALI. The product range is available in various dimensions and lumen outputs with advanced controls.

High efficiency of more than 85 lm/W

The range helps in saving up to 50% energy and up to 5 times more life over CFL downlighters making it an efficient solution with high performance.

Longer life with 50K hours

With higher efficiency and energy saving the GreenPerform also results into a longer life with up to 50,000 hours.

Key features

- 50%* energy savings
- No maintenance
- Eco-friendly

Technical specifications

Type	GreenPerform				
System Wattage (W)	6.5	10.5	12	15.5	22
IP Rating	IP20				
Lumen Output (lm)	600	1000	1300	1600	2200
System Efficacy (lm/W)	>85				
Color Temperature (K)	3000, 4000, 6500				
CRI	>80				
Housing	Pressure die cast aluminium				
Cover	High efficiency diffuser with more than 85% transmittance				
Mounting	Recessed				
THD	<10%				
PF	>0.9				
Operating Voltage	220V-240V, 50/60 Hz				



Applications

Reception

Conference room

Corridor



GreenLED Ultima

Green LED Ultima is a slim downlighter with high lumen efficacy of 100 lm/W. It displays true colors with its high color rendering index of 80 and has a long life of 40000 hours.

Performance in slim design

Slim aesthetic design

Ultima adds aesthetics to the space with its slim lip design.

Ultimate performance

High efficiency of 100 lm/w leading to best in class savings over conventional CFL downlight.

Display true color

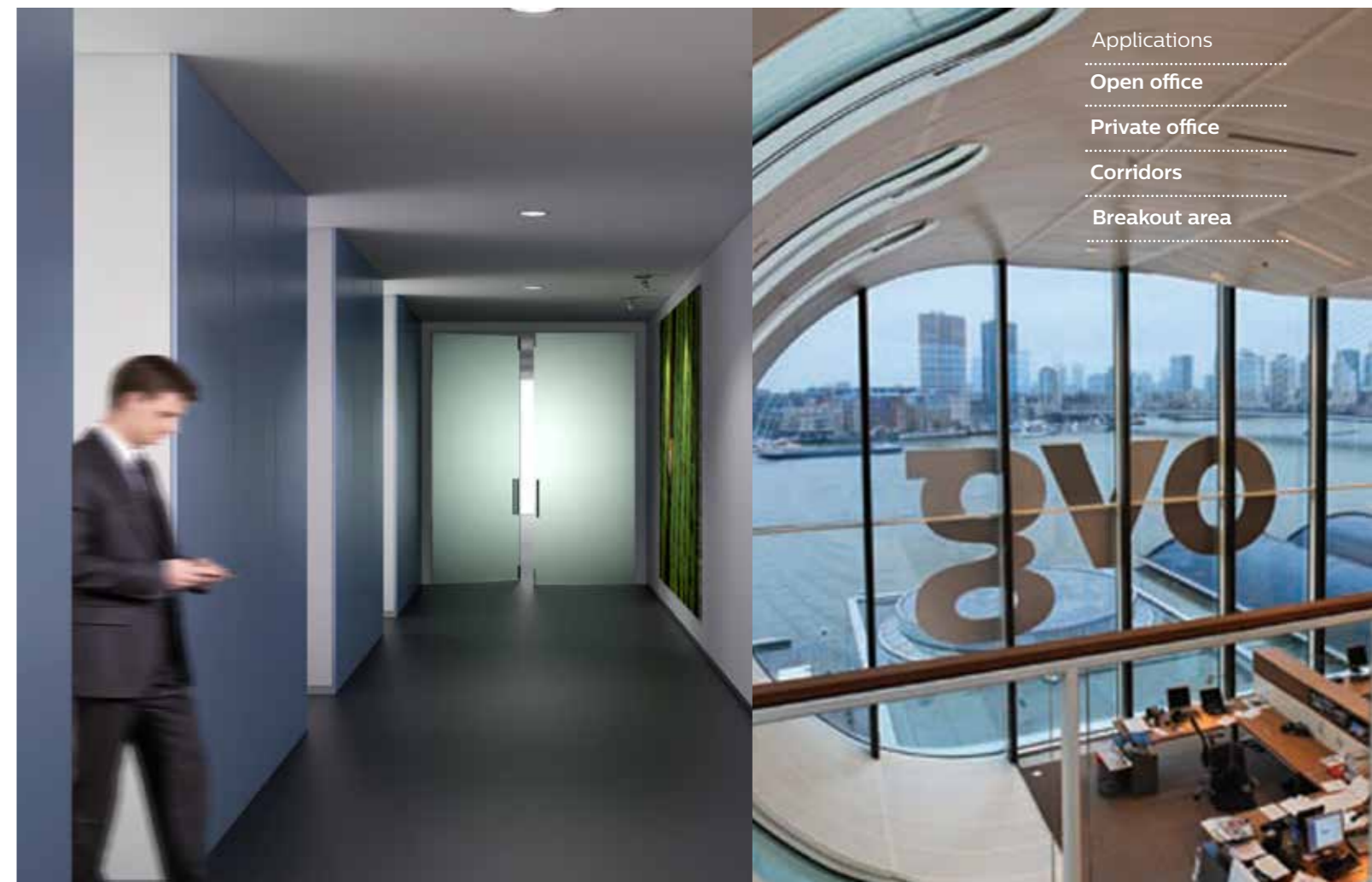
Powered with DuraMAX technology, Ultima gives durable brightness enriching true color of merchandise.

Key features

- Long life of 40000* hours
- High quality light
- Eco-friendly

Technical specifications

Type	GreenLED Ultima	
System Wattage (W)	6.5	10.5
IP Rating	IP20	
Lumen Output (lm)	600	1000
System Efficacy (lm/W)	100	
Color Temperature (K)	3000, 4000, 6500	
CRI	>80	
Housing	Engineering plastic	
Cover	High efficiency diffuser	
Mounting	Recessed	
THD	<10%	
PF	>0.9	
Operating Voltage	220V-240V, 50/60 Hz	



Applications

Open office

Private office

Corridors

Breakout area



GreenSpot

GreenSpot family offers a choice of lamps or LED light sources as well as a variety of optics, accessories and color finishes. GreenSpot enables retailers to choose a lighting solution that meets their needs.

Flexible, stylish and robust

Multiple configuration options

GreenSpot comes in various configurations making installation easy and as per requirement.

Suitable for accent general illumination

The luminaire serves multiple purpose, it can be used for both accent and general illumination.

Brighter ceiling for livelier spaces

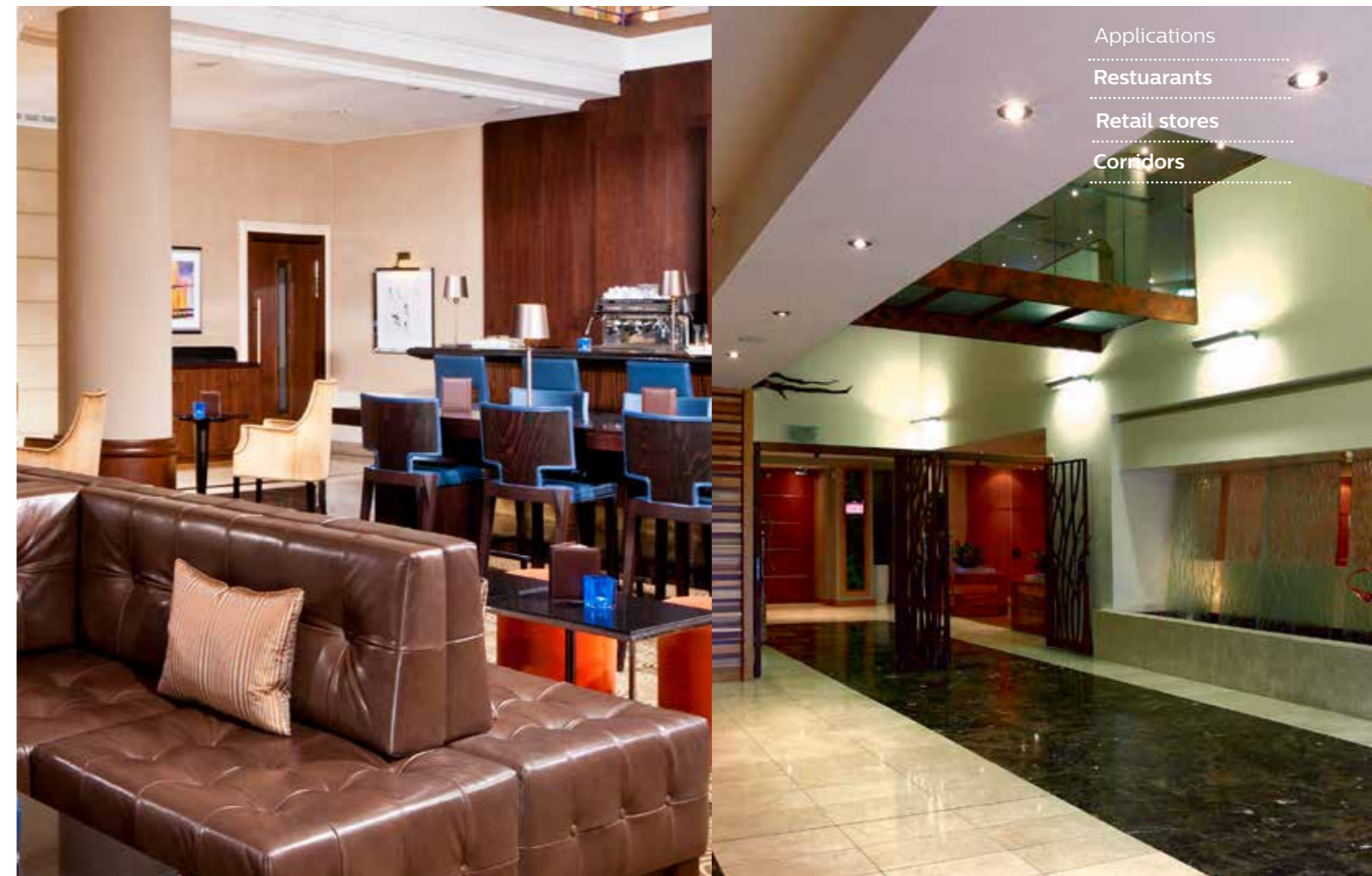
It keeps the ceiling bright making the space look large and bright.

Key features

- Consistent light output
- Long life
- CRI>80

Technical specifications

Type	GreenSpot Gen 2	
System Wattage (W)	7	15
IP Rating	20	
Lumen Output (lm)	600	1200
System Efficacy (lm/W)	>85	
Color Temperature (K)	3000, 4000, 5000	
CRI	>80	
Housing	Pressure die cast aluminium	
Cover	Clear	
Mounting	Recessed	
THD	<10%	
PF	>0.9	
Operating Voltage	220V-240V, 50/60Hz	



- Applications
- Restuarants
- Retail stores
- Corridors



Key features

- Consistent light output
- Long life
- CRI>80

Technical specifications

Type	DN170
System Wattage (W)	15
IP Rating	20
Lumen Output (lm)	950
System Efficacy (lm/W)	>60
Color Temperature (K)	3000, 4000, 5000
CRI	>80
Housing	Pressure die cast aluminium
Cover	Clear
Mounting	Surface
THD	<10%
PF	>0.9
Operating Voltage	220V-240V, 50/60Hz

GreenLED Surface

GreenLED surface is best suited for modern interiors. It offers all the benefits of regular downlighter like 50% energy saving, long life and maintenance free operation.

Compact and efficient

Easy installation

Compact product which is easy to mount and install.

High savings

This luminaire offers 50%* savings over CFLs.

Highly efficient

GreenLED surface comes with advanced optics for glare free lighting.





Variant

EcoAccent

EcoAccent delivers powerful, good-quality accent lighting, enabling retailers to display their goods in the very best light. The track mounted EcoAccent is available in a choice of black and white finishes. The combination of efficient LED technology and a robust heat sink ensures that this is a reliable and long lasting solution.

Enhancing retail experience

Excellent optical design

EcoAccent delivers light with better beam control & edge uniformity which ensures that the important features of the merchandise is highlighted and it creates a long lasting impact on the customer.

Higher visual comfort

High color rendering index of the luminaire ensures superiors visual comfort

Wide range of beam angles

Wide range of beam angles, 120,240 and 360, enables greater flexibility to design.

Key features

- >30% savings as compared to CDM solutions
- Excellent thermal management system
- Long life of 40,000* hours

Technical specifications

Type	ST271		RS271	
System Wattage (W)	29	47	28	50
IP Rating	20		20	
Lumen Output (lm)	2000	4000	2000	4000
System Efficacy (lm/W)	>85		up to 80	
Color Temperature (K)	3000, 4000, 5000		3000, 4000, 5000	
CRI	80		80	
Housing	Pressure die cast aluminium		Pressure die cast aluminium	
Cover	Clear		Clear	
Mounting	Track mounted		Recessed	
THD	<15%		<10%	
PF	>0.9		>0.9	
Operating Voltage	220V-240V, 50/60 Hz		220V-240V, 50/60 Hz	



Applications
Retail stores

Indoor Industrial

Table of Contents

Product	Pg
EnduraLED Bulkhead	50
EnduraLED Waterproof	52
EnduraLED Wellglass	54
GreenBay	56
GreenPerform Batten	58
SmartBright Batten	60
DuraLED Highbay	62
MaXolid	64



Key features

- Long life of 50000* hours
- Suitable for tough conditions
- Eco-friendly
- Versatile solution- can be mounted on ceiling as well as wall

Technical specifications

Type	WT202W
System Wattage (W)	9
IP Rating	IP66
Lumen Output (lm)	600
System Efficacy (lm/W)	70
Color Temperature (K)	6500
CRI	80
Housing	High pressure die cast aluminium
Cover	Polycarbonate
Mounting	Surface
THD	<20%
PF	>0.9
Operating Voltage	220V-240V, 50/60 Hz

EnduraLED Bulkhead

An innovative and reliable LED solution that fits seamlessly in a variety of applications. This luminaire can be installed as ceiling mounted and wall mounted. It serves as a simple energy efficient alternative to CFL/ incandescent bulkhead luminaires.

Versatile lighting solution

80%* energy savings

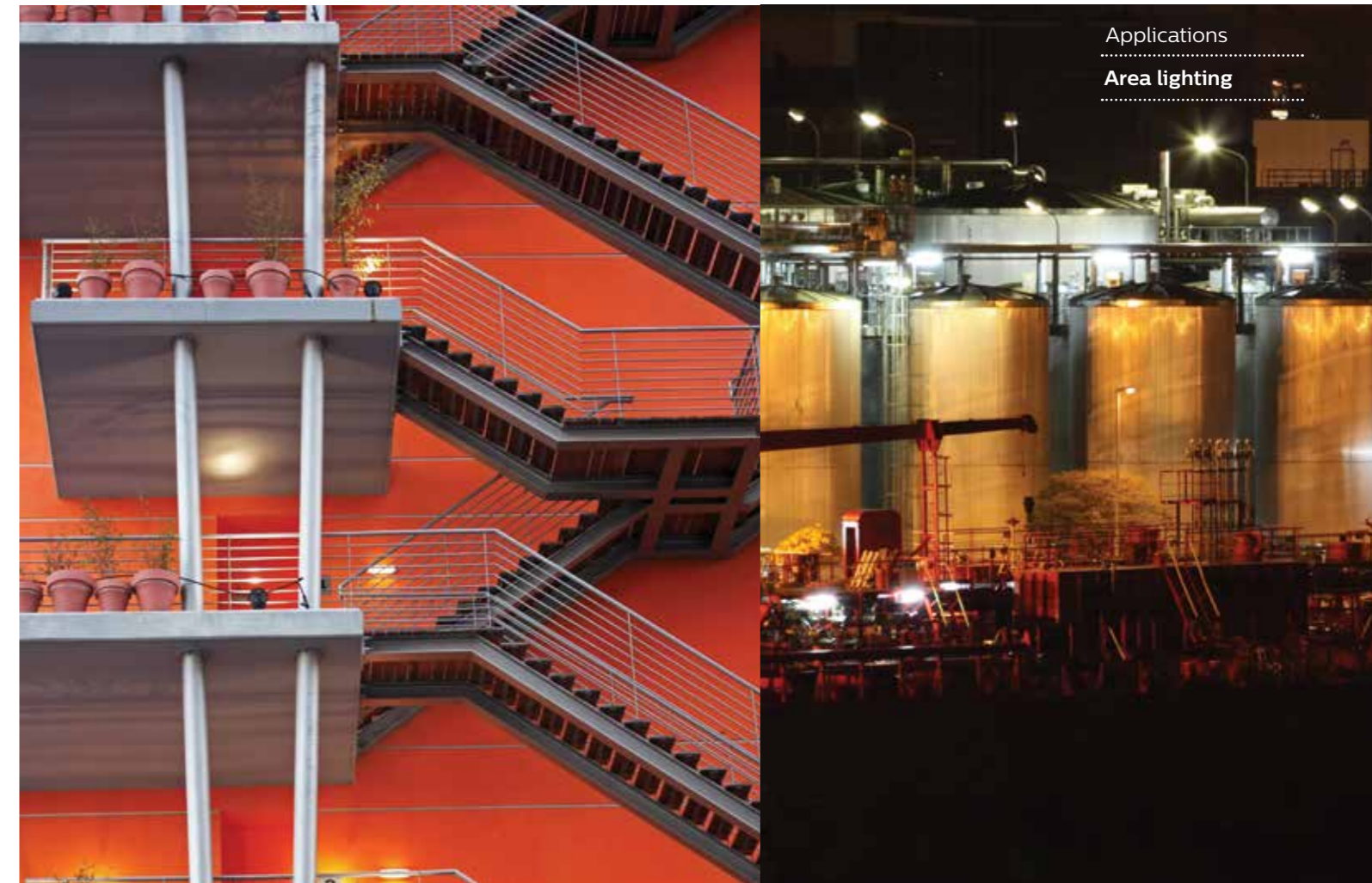
The luminaire offers high energy savings without compromising on lighting quality.

IK09 certified- Impact resistant

Minimizes commonly observed glass breakage issues either due to transit or at site.

IP66- Protected against dust and water

Ideal for rough industry environments. Offers stable and consistent performance.



Applications

Area lighting



EnduraLED Waterproof

EnduraLED Waterproof is a reliable and affordable LED waterproof system that delivers up to 40%* energy savings compared to conventional lighting products. The reliable and robust housing structure helps to maximize inherent LED advantage of energy saving combined with long life.

Versatile lighting solution

Up to 40%* energy savings

This luminaire is highly efficient. It saves up to 40%* energy.

Long life

It has a long life of up to 50000* hours.

Robust housing

Sturdy housing structure helps maximize inherent benefits of LED.

Key features

- System efficacy >80 lm/W
- Housing and cover made of virgin PC
- Installation possible with conduit/ pipe/ surface mounting
- Dedicated optics provide precise symmetric light distribution

Technical specifications

Type	WT550C
System Wattage (W)	38
IP Rating	IP65
Lumen Output (lm)	4000
System Efficacy (lm/W)	105
Color Temperature (K)	6500
CRI	80
Housing	Virgin polycarbonate
Cover	Virgin polycarbonate
Mounting	Surface/ Suspended
THD	<20%
PF	>0.95
Operating Voltage	140V-270 V



Applications
Area lighting



EnduraLED Wellglass

Innovative LED well glass luminaire for direct replacement of 70W HPSV/125 HPMV conventional fixtures. EnduraLED Wellglass has the potential to save >60 %* energy without compromising on lighting parameters.

Efficiency, durability and performance

>60%* energy savings

The luminaire offers high energy savings without compromising on lighting quality.

IK 08- Vandal protected front diffuser

Minimizes commonly observed glass breakage issues either due to transit or at site.

IP 66- Protected against dust

Ideal for rough industry environments. Offers stable and consistent performance.

Key features

- System efficacy of 90 lm/W
- Pressure die cast aluminium housing
- Supplied with adjustable mounting bracket and loop in loop out provision
- UV stabilized acrylic diffuser

Technical specifications

Type	BY200P	BY200P
System Wattage (W)	29	39
IP Rating	IP66	IP66
Lumen Output (lm)	2700	3500
System Efficacy (lm/W)	93	90
Color Temperature (K)	4000,6500	6500
CRI	80	80
Housing	High pressure die cast aluminium	High pressure die cast aluminium
Cover	Tempered glass	Tempered glass
Mounting	Dedicated mounting bracket (CRCA)	Dedicated mounting bracket (CRCA)
THD	≤10%	≤10%
PF	>0.95	>0.95
Operating Voltage	220-240V, 50/60 Hz	220V-240V, 50/60 Hz



Applications

Process areas



Key features

- >50%* energy saving
- Long life of 50000* hours
- Maintenance free
- Eco-friendly

Technical specifications

Type	GreenBay Gen II		
System Wattage (W)	70	105	140
IP Rating	IP65		
Lumen Output (lm)	7200	11000	14500
System Efficacy (lm/W)	>100		
Color Temperature (K)	5700		
CRI	70		
Housing	High pressure die cast aluminium		
Cover	Tempered glass		
Mounting	Universal with dedicated mounting KITS		
THD	<20%		
PF	>0.9		
Operating Voltage	120V-277V		

GreenBay

GreenBay is an integrally designed, versatile lighting solution from Philips to address different lighting requirements within industrial spaces. From under canopies to truss mounted medium bay luminaires, GreenBay can be used across recessed or suspended mounted applications.

Efficiency, durability and performance

Day light harvesting and occupancy sensing

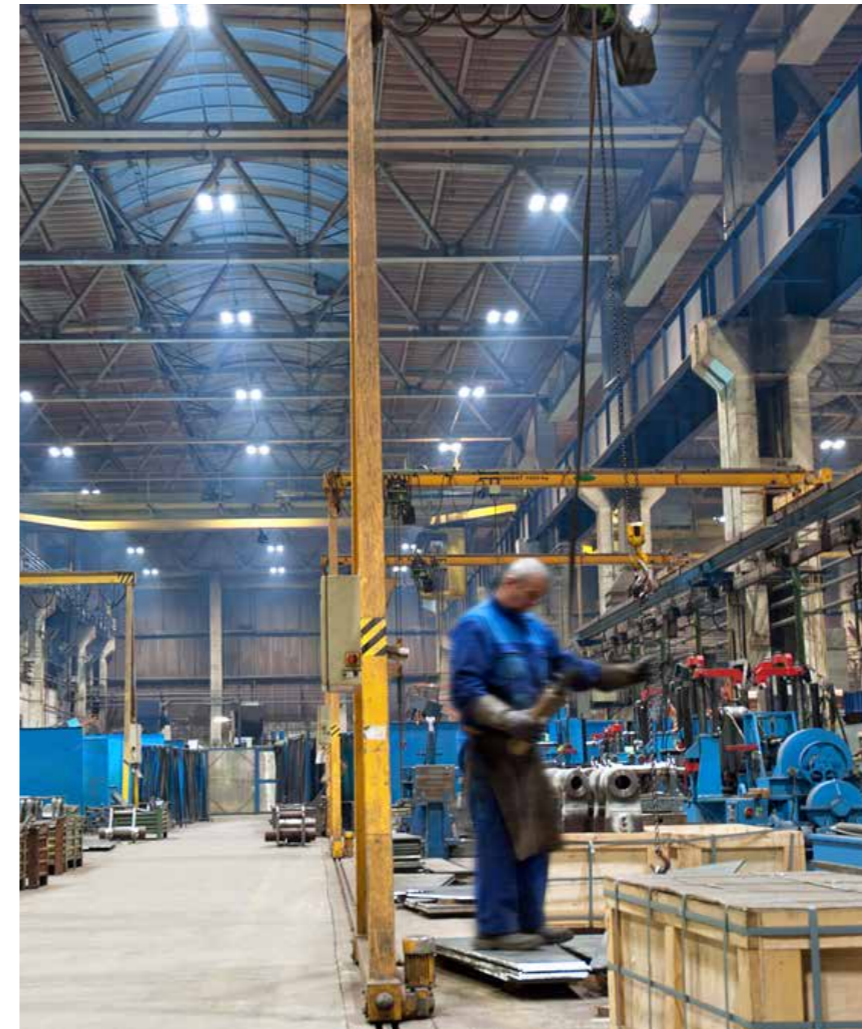
The inbuilt intelligence through DALI compatibility enhances the energy saving potential.

Direct replacement for Metal halides

Minimizes commonly observed glass breakage issues either due to transit or at site.

Multiple mounting options

Ideal for rough industry environments. Offers stable and consistent performance.



Applications

Process areas

Warehouse



GreenPerform batten

GreenPerform LED batten is an innovative solution for conventional twin lamp battens. It is designed to be a direct replacement for conventional battens providing energy savings of more than 30%* with no compromise on lighting performance. Integrally designed and developed by Philips, this product provides seamless adoption towards industry leading technology.

Efficiency, durability and performance

High system efficacy

The luminaire has high system efficacy of 100 lm/W.

Attractive payback

GreenPerform quickly covers its cost in less than 3 years.

Eco-friendly

The luminaire has no mercury content making it sustainable and green lighting solution.

Key features

- 30%* energy saving
- Long life of 50000* hours
- Maintenance free

Technical specifications

Type	BN 208C Gen II
System Wattage (W)	36
IP Rating	IP20
Lumen Output (lm)	4000
System Efficacy (lm/W)	110
Color Temperature (K)	3000,4000, 5000, 6500
CRI	>80
Housing	CRCA
Cover	High efficiency diffuser
Mounting	Surface/Suspended
THD	<10%
PF	>0.95
Operating Voltage	220V-240V, 50/60Hz





SmartBright batten

SmartBrite batten is a new and innovative LED batten which saves up to 45%* energy without compromising on the light quality. It is eco-friendly and inherits all the benefits of LED like long life and energy saving. It saves energy while giving out high quality light, CRI>80.

High performance and savings

Long life

SmartBrite batten has a long life of up to 25000* burning hours.

High quality light, CRI>80

This batten displays true colors which helps increase productivity and reduce errors at workplaces.

High light output

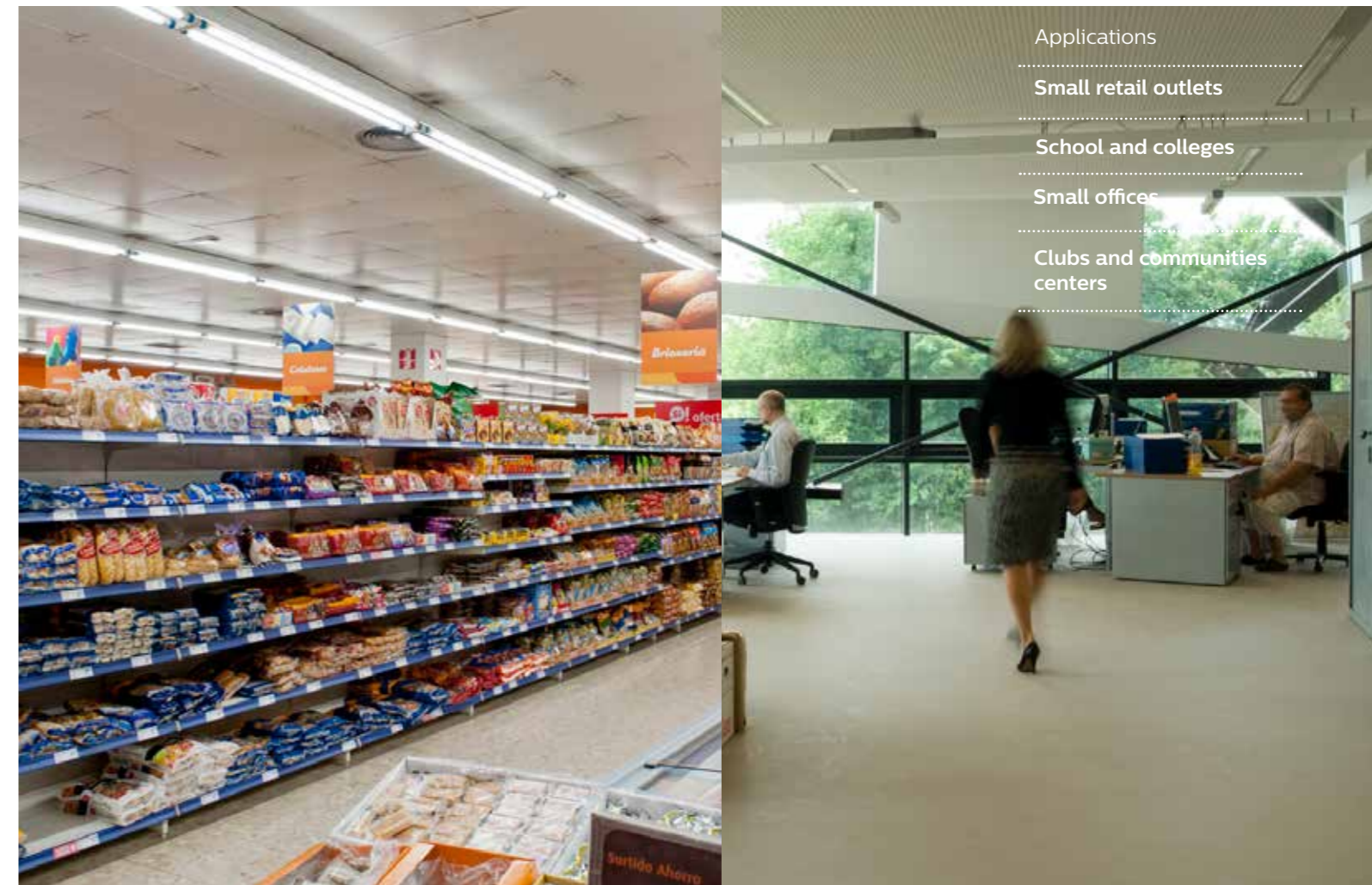
This batten gives high light output of 2000 lumens.

Key features

- No harmful UV/IR radiation
- Maintenance friendly
- Extruded aluminium housing

Technical specifications

Type	BNO21
System Wattage (W)	21
IP Rating	IP20
Lumen Output (lm)	2000
System Efficacy (lm/W)	>95
Color Temperature (K)	4000, 6500
CRI	>80
Housing	Extruded aluminium
Cover	Polycarbonate
Mounting	Wall, Conduit
THD	<20%
PF	>0.9
Operating Voltage	140 V-270 V



Applications

- Small retail outlets
- School and colleges
- Small offices
- Clubs and communities centers



DuraLED Highbay

DuraLED highbay provides an energy efficient lighting solution. The product family comes in lumen pack of 10k lumen with a choice of narrow beam and wide beam optics. This provides a perfect retrofit solution for upgrading from 250W conventional highbay to LED lighting solution which saves up to 70%* energy.

Superior performance, attractive savings and payback

Highly efficient, 125lm/W

DuraLED highbay delivers best system efficacy of 125lm/W. The luminaire is easy to install and replace as it is a direct replacement for 250W HPI BU lamp.

Attractive payback

This luminaire offers high energy saving and is extremely affordable which means that you recover your cost in a very short period.

Choice of optics for different applications

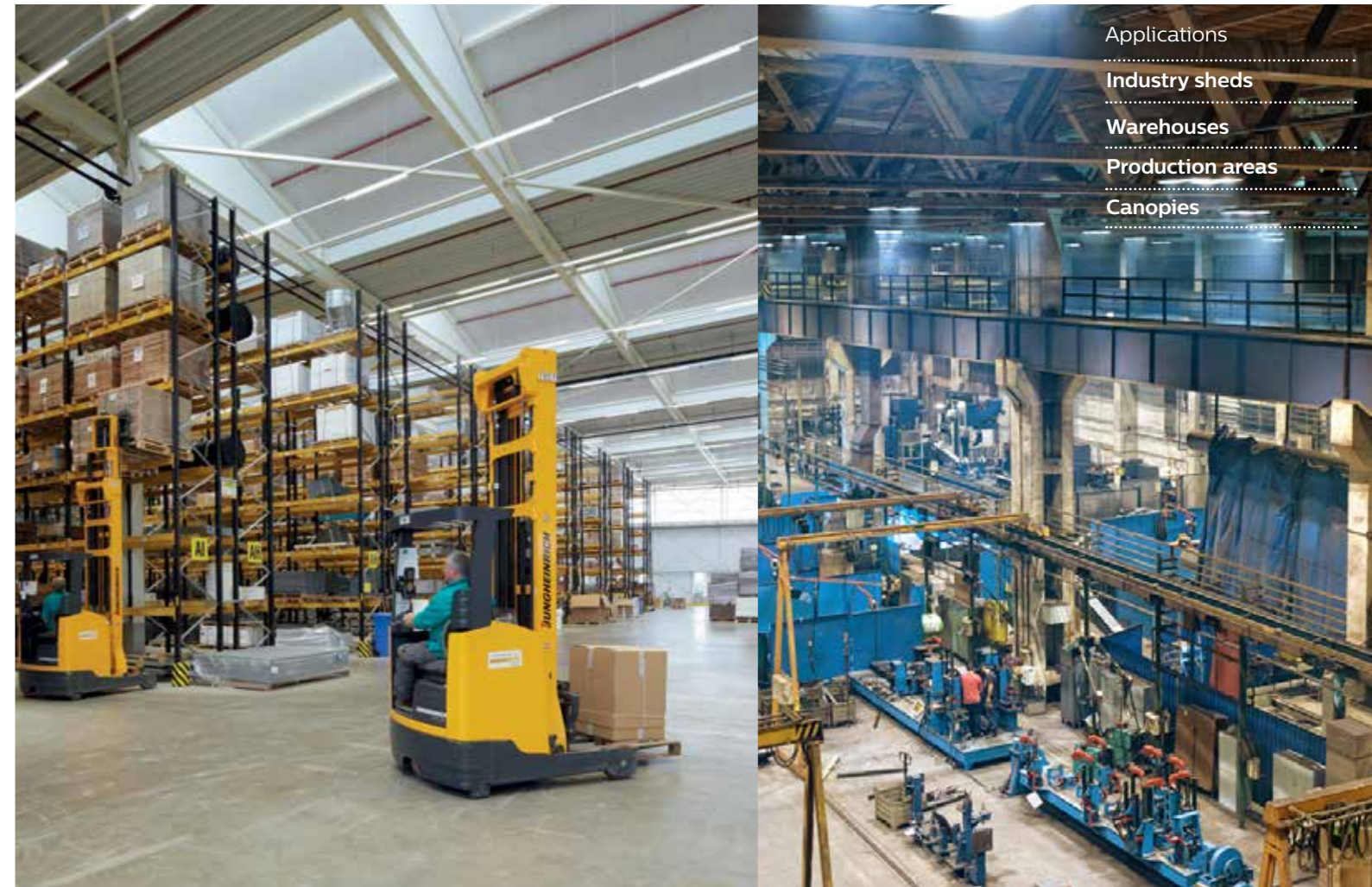
This luminaire comes with choice of narrow beam and wide beam optics making it suitable for wide range of applications.

Key features

- Highly efficient, 125 lm/W
- Attractive payback
- Long life of up to 50000* hours

Technical specifications

Type	BY325
System Wattage (W)	80
IP Rating	IP 65
Lumen Output (lm)	10000
System Efficacy (lm/W)	125
Color Temperature (K)	6500
CRI	80
Housing	High pressure die cast aluminium
Cover	Tempered glass
Mounting	Suspended
THD	<20%
PF	>0.9
Operating Voltage	220-240V, 50/60 Hz



Applications

Industry sheds

Warehouses

Production areas

Canopies



Key features

- System efficacy >100 lm/W
- Luminaire housing made of high pressure die cast aluminium
- Installation possible with hook or threaded rod
- Dedicated optics provide precise symmetric light distribution

Technical specifications

Type	BY416 NI	BY415
System Wattage (W)	210	118
IP Rating	IP65	IP65
Lumen Output (lm)	22000	14500
System Efficacy (lm/W)	105	125
Color Temperature (K)	5700	6500
CRI	70	80
Housing	High pressure die cast aluminium	High pressure die cast aluminium
Cover	Tempered glass	Tempered glass
Mounting	Suspended	Suspended
THD	<20%	<20%
PF	>0.9	>0.9
Operating Voltage	220V-240V, 50/ 60 Hz	220V-240V, 50/60 Hz

MaXolid

MaXolid highbay is an intelligent, direct HID highbay replacement which saves 50%* energy vs. conventional industrial highbay. The inbuilt intelligence through DALI compatibility enhances the energy saving potential as a result of daylight harvesting and occupancy sensing.

Combining the best features like instant start, long life, controllability and high efficiency, MaXolid provides significant and sustained energy savings over the product life cycle.

Inbuilt intelligence for higher returns

Day light harvesting and occupancy sensing

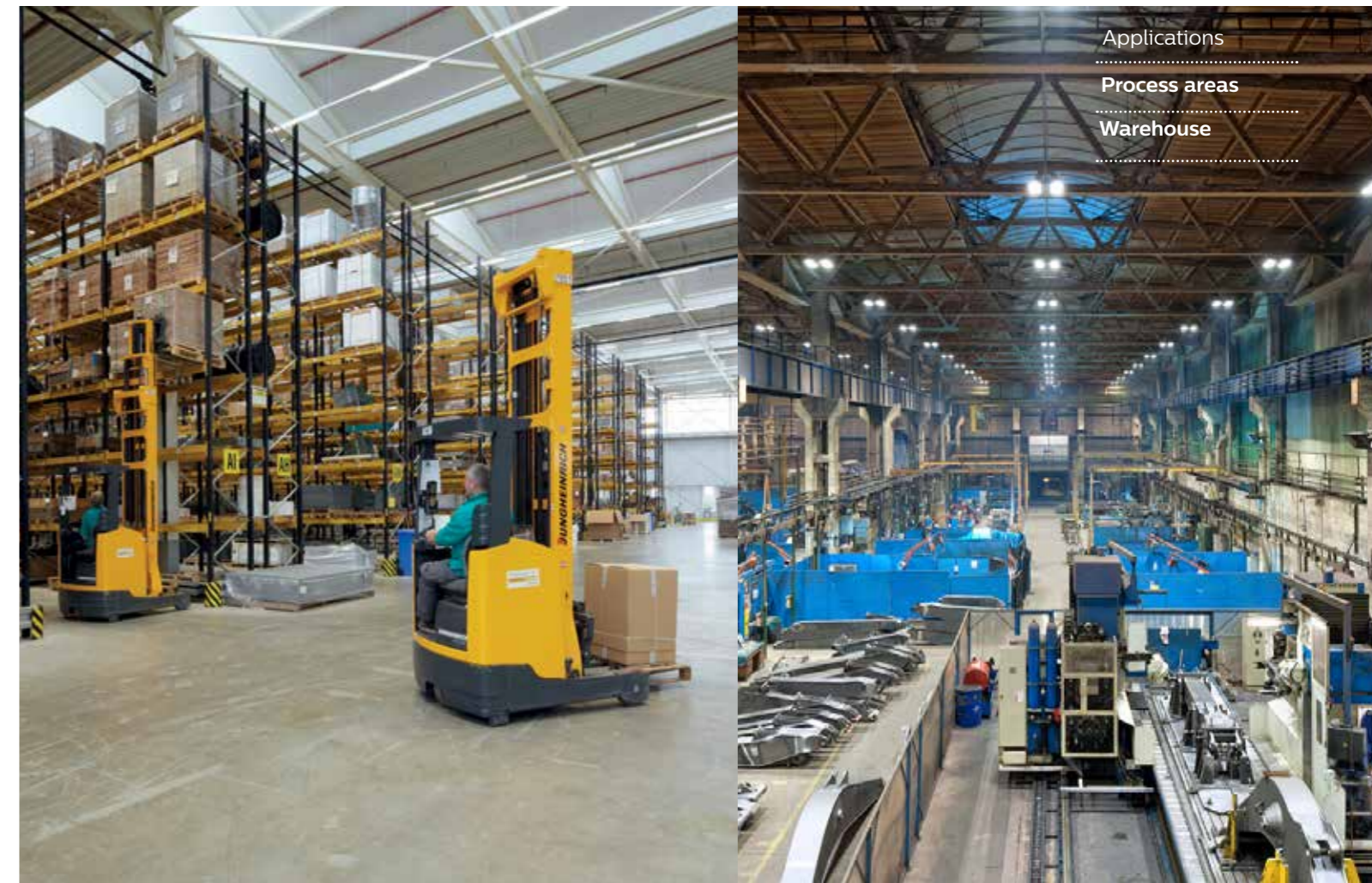
The inbuilt intelligence through DALI compatibility enhances the energy saving potential.

Direct replacement

MaXolid highbay is an intelligent direct HID replacement which saves 50%* energy.

High system efficacy

With efficacy of more than 100 lm/W, the luminaire is highly efficient.



Public Luminaires

Table of Contents

Product	Pg
GreenLine Xtra	68
GreenLine Gen2	70
SmartBright Street	72
SmartBright Street	74
GreenLine Smart	76
TempoLED	78
FloodTune	80
Uniflood	82
Uniflood 2	84
CityCube Post-top	86
CityCube Wall Mount and Bollard	88
LED Post-top	90
LED Step-light	92
LED Spot	94
Uplite	96
LED Marker	98
LED Bollard	100
Solar Street Light System	102
VayaLinear	104



Technical specifications

Type	BRP322
System Wattage (W)	125- 210
IP Rating	IP66
Lumen Output (lm)	12000-21000
System Efficacy (lm/W)	100
Color Temperature (K)	5700
CRI	70
Housing	LM6 high pressure die cast aluminium
Cover	Polycarbonate/ HT Glass cover
Mounting	48mm to 60mm OD, side mounting
THD	<20
PF	0.95
Operating Voltage	140-270V

Note

- All the specifications are nominal values and will have a variation of (+/-10%) at rated voltage of 240V AC
- Other variant's available on requests

GreenLine Xtra

Maintenance free LED luminaire with urban looks for city roads offering best in class energy savings. Existing luminaires can be easily upgraded to new LED technology with minimum changes in existing installation.

Build to last, designed to save

Unique lens plate and choice of optics

- Meets IS1944 lighting requirement for A2/ B1 category road
- Ensures uniform lighting and higher spacing
- Reduced total cost of ownership

Best in class driver and LED's

- Higher energy saving
- Constant light output over wide voltage range
- Maintenance free and longer life of 10 years*

Installer friendly

- Simple and faster installation
- Easy access for driver replacement



Applications

Outdoor

Street lighting



Technical specifications

Type	GreenLine V2 (BRP 409)	GreenLine V2 (BRP410)
System Wattage (W)	36- 70	70- 105
IP Rating	IP66	IP66
Lumen Output (lm)	3500- 7000	7000- 11000
System Efficacy (lm/W)	100	100
Color Temperature (K)	5700	5700
CRI	70	70
Housing	LM6 high pressure die cast aluminium	LM6 high pressure die cast aluminium
Cover	Polycarbonate/ Glass	Polycarbonate/ Glass
Mounting	Side entry with OD between 28-40mm	Side entry with OD of 48-60mm
THD	<20%	<20%
PF	>0.95	>0.95
Operating Voltage	140V-270 V AC 50Hz	140V-270 V AC 50Hz

Note

- All the specifications are nominal values and will have a variation of (+/-10%) at rated voltage of 240V AC
- Other variant's available on requests

GreenLine Gen2

Road lighting luminaire with unique peanut lens and high power LED. It ensures uniform light distribution, higher spacing between poles and maintenance free system. With a life class of 50000 hours* (At L70) and excellent thermal management, this luminaire is an apt choice for major roads.

Build to last, designed to save

Unique lens plate and choice of optics

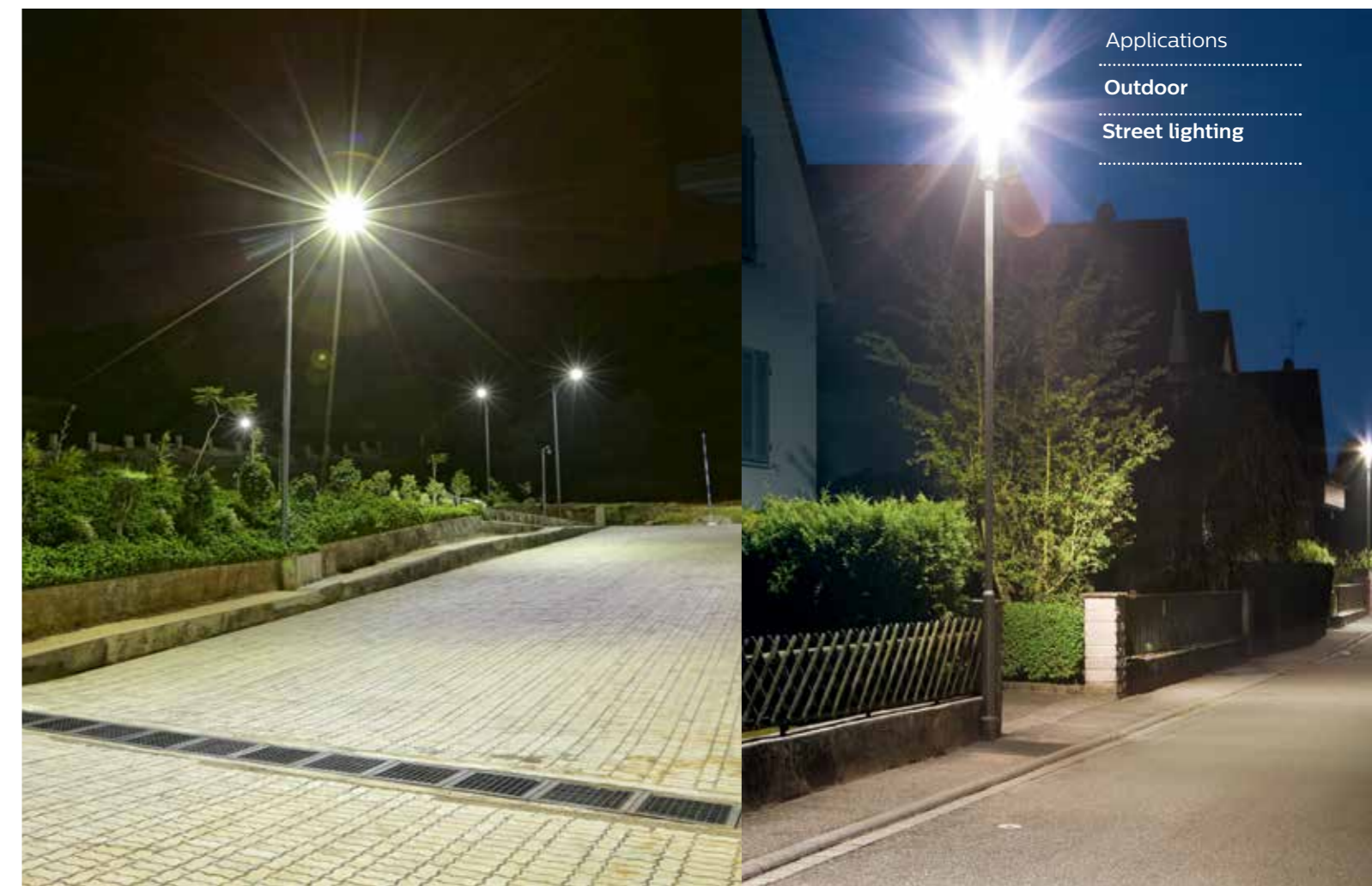
- Meets IS1944 lighting requirement for A2/ B1 category road
- Ensures uniform lighting and higher spacing
- Reduced total cost of ownership

Best in class driver and LED's

- Higher energy saving
- Constant light output over wide voltage range
- Maintenance free and longer life of 10 years*

Installer friendly

- Simple and faster installation
- Easy access for driver replacement





Technical specifications

Type	BRP 052
System Wattage (W)	40
IP Rating	IP65
Lumen Output (lm)	3600
System Efficacy (lm/W)	90
Color Temperature (K)	5700
CRI	70
Housing	LM6 high pressure die cast aluminium
Cover	Glass
Mounting	Side entry with OD 32-40mm
THD	<20%
PF	>0.9
Operating Voltage	140V-270 V AC 50Hz

Note

- All the specifications are nominal values and will have a variation of (+/-10%) at rated voltage of 240V AC
- Other variant's available on requests

SmartBright Street

SmartBright street offers a long lasting performance even under diverse environment. It is designed to save up to 70% energy compared to conventional lighting solutions. It comes in high quality material with superior aesthetic looks.

Reliable savings, lasting brightness

High quality material and design

- Finless design with superior aesthetic looks
- Toughened and shatter-proof quality built-in lens enhances safety
- Pressure die-cast housing offers excellent corrosion-resistance and robustness

Long-lasting performance

- Designed for energy savings of up to 70%
- 50k hours operation
- Designed for operations under diverse environment from -10°C to 45°C

Uniform lighting

- Street light distribution with uniform lighting on the street



Applications

Residential

Security

Parks



Technical specifications

Type	BRP 042
System Wattage (W)	20
IP Rating	IP65
Lumen Output (lm)	1900
System Efficacy (lm/W)	95
Color Temperature (K)	5700
CRI	70
Housing	LM6 high pressure die cast aluminium
Cover	Polycarbonate
Mounting	Side entry with OD 28-40mm
THD	<10%
PF	>0.9
Operating Voltage	100-270V AC 50 Hz

Note

- All the specifications are nominal values and will have a variation of (+/-10%) at rated voltage of 240V AC
- Other variant's available on requests

SmartBright Street

The luminaire offers uniform lighting on street and high energy savings of up to 70%*. With high impact-resistant polycarbonate cover and IP65 protection, it is ideal for touch weather conditions. It has a long life as compared to FTL/CFL street lights and meets lighting level as per B2/B1 category roads of IS1944.

Reliable savings, lasting brightness

Long lasting performance

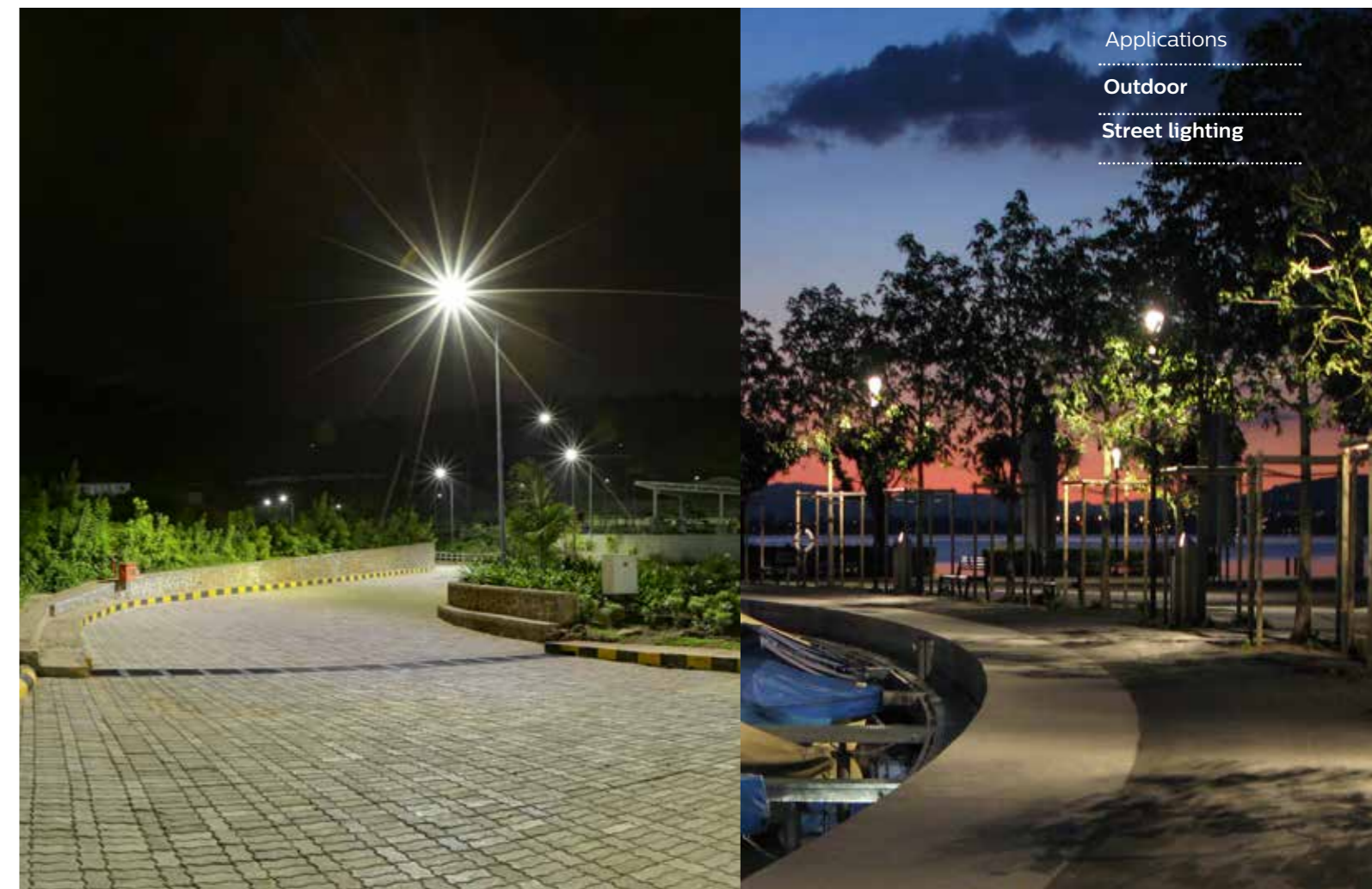
- Designed for energy savings of up to 70%*.
- 50000 burning hours @L70
- Designed for operations under diverse environment from -10°C to 45°C

High quality material and design

- Finless design with superior aesthetics looks
- Toughened and shatter-proof quality built-in lens enhances safety
- Pressure die-cast housing offers excellent corrosion-resistance and robustness

Uniform lighting

- Street light distribution with uniform lighting on the street



Applications

Outdoor

Street lighting



Technical specifications

Type	BRP022	BRP022
System Wattage (W)	10	20
IP Rating	IP66	IP66
Lumen Output (lm)	1000	2000
System Efficacy (lm/W)	100	100
Color Temperature (K)	5700	5700
CRI	70	70
Housing	LM6 high pressure die cast aluminium	LM6 high pressure die cast aluminium
Cover	Polycarbonate	Polycarbonate
Mounting	Side entry with OD 28-40mm	Side entry with OD 28-40mm
THD	<10%	<10%
PF	>0.95	>0.95
Operating Voltage	140-270V AC 50Hz	140-270V AC 50Hz

Note

- All the specifications are nominal values and will have a variation of (+/-10%) at rated voltage of 240V AC
- Other variant's available on requests

GreenLine Smart

GreenLine Smart luminaire is perfect for secondary roads and pathways. It sports a compact body, which offers a highly efficient lighting solution as compared to fluorescent and CFL street lights. This is a versatile street light that can be used in various other outdoor applications.

Build to last, designed to save

Unique lens plate and choice of optics

- Ensures uniform lighting and higher spacing
- Reduced total cost of ownership
- No dark patches and low light spill

Best in class driver and LED's

- Higher energy saving
- Constant light output over wide voltage range
- Maintenance free and longer life of 10 years*

Installer friendly

- Simple and faster installation
- Easy access for driver replacement



Applications

Outdoor
Street lighting



Technical specifications

Type	BVP410
System Wattage (W)	160 - 240
IP Rating	IP65
Lumen Output (lm)	15000 - 25000
System Efficacy (lm/W)	100
Color Temperature (K)	5700
CRI	70
Housing	LM6 high pressure die cast aluminium
Cover	Glass
Mounting	Wall/ bracket
THD	<20%
PF	>0.95
Operating Voltage	140-270V AC 50 Hz

Different options for optics available

Note

- All the specifications are nominal values and will have a variation of (+/-10%) at rated voltage of 240 V AC
- Other variant's available on requests

TempoLED

Philips TempoLED is a general-purpose LED flood lighting luminaire for various lighting applications, such as area lighting, sports lighting, bill board, facade, industry area, security lighting and other general applications. The TempoLED flood light incorporates LED light sources, optical system, heat sink and drivers into one compact housing which ensures the LED's have a long life.

Compact and robust

Unique lens plate and choice of optics

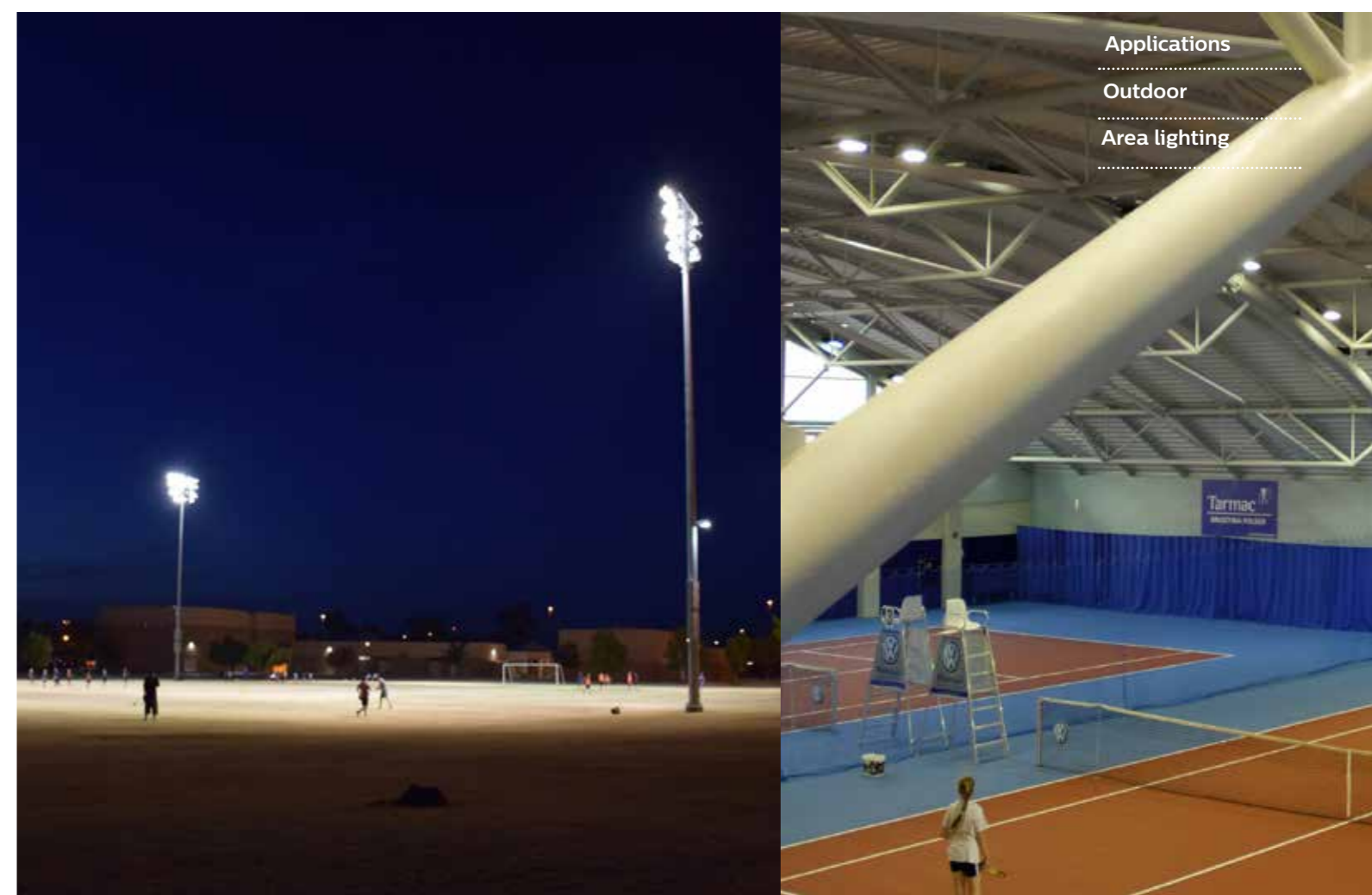
- Ensures uniform lighting and higher spacing
- Reduced total cost of ownership
- Constant light output and distribution

Best in class driver and LED's

- Higher energy saving
- Constant light output over wide voltage range
- Maintenance free and longer life of 10 years*

Installer friendly

- Simple and faster installation
- Easy access for driver replacement



Applications

- Outdoor
- Area lighting



Technical specifications

Type	BVP220
System Wattage (W)	40
IP Rating	IP65
Lumen Output (lm)	1800 (white color)
Housing	LM6 high pressure die cast aluminum, powder-coated finish
Cover	Polycarbonate
Mounting	Integrated tilting surface-mount base
Operating Voltage	140-270V AC 50 Hz

Note

- All the specifications are nominal values and will have a variation of (+/-10%) at rated voltage of 240V AC
- Mobile app can be downloaded from the google play store



FloodTune

FloodTune

Philips FloodTune is easy to use, reliable and cost effective color changing outdoor flood light for creating dynamic lighting effects by just using your smart phone to control lights.

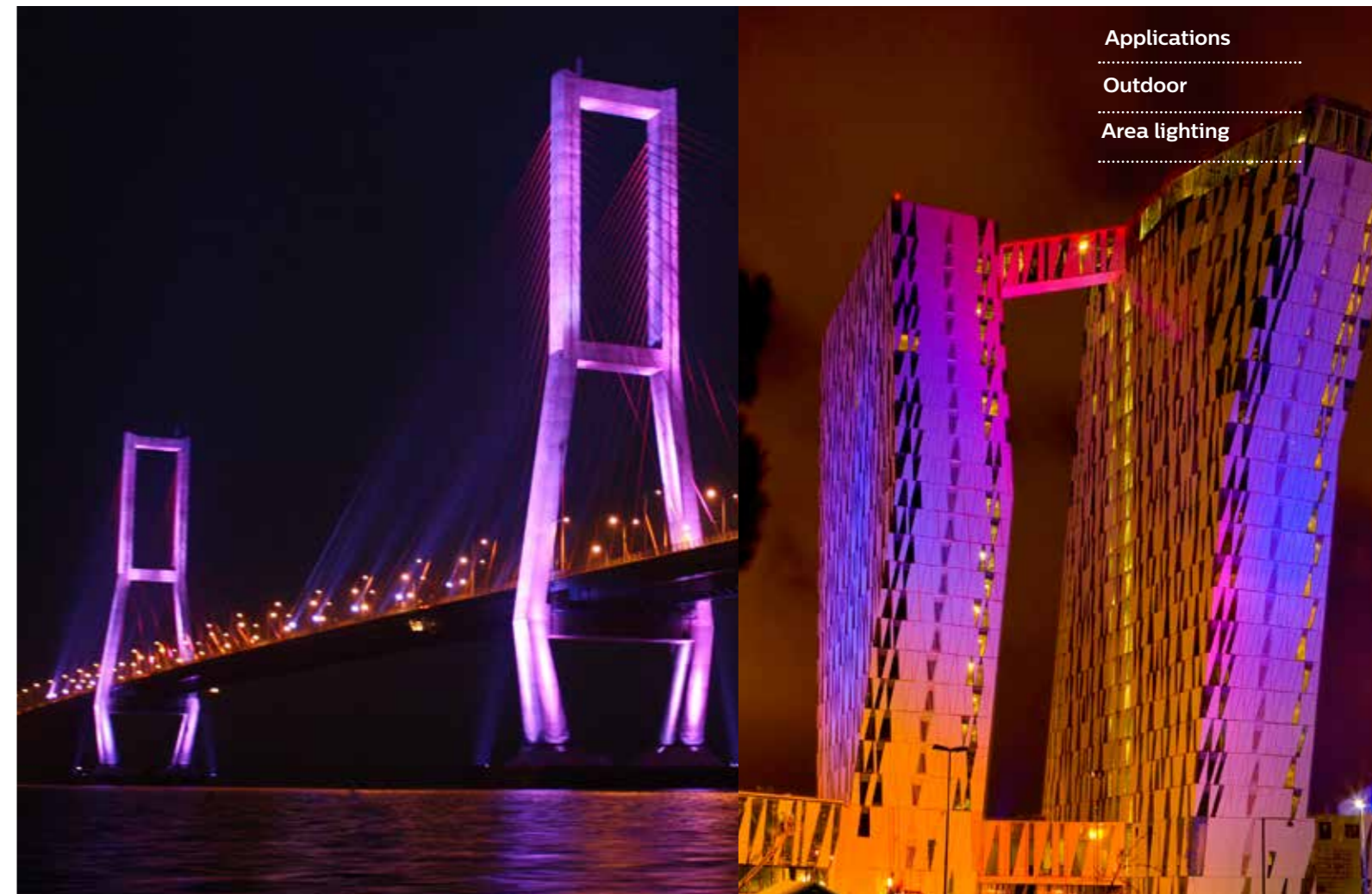
Dynamic lighting made easy

Connected color changing floodlight

- RGBW color changing floodlight for resorts, parks, banquet halls, religious monuments, building facades etc.

Installer friendly

- Easy connect using Bluetooth
- Plug and play
- 5 preset scenes
- Can group up to 20 luminaires



Applications

Outdoor

Area lighting



Uniflood

Philips Uniflood is an integral flood light with driver inside a PDC housing. It is highly efficient, reliable and sturdy compared to similar LED, halogen and metal halide flood lights.

It delivers significant energy savings compared to conventional floodlights. The luminaire comes with a choice of lumen pack to suite various applications as well as a universal mounting bracket for easy angle adjustment.

More brightness, more savings

Unique lens plate and choice of optics

- Ensures uniform lighting and higher spacing
- Reduced total cost of ownership
- Constant light output and distribution

Best in class driver and LED's

- Higher energy saving
- Constant light output over wide voltage range
- Maintenance free and longer life of 10 years*

Installer friendly

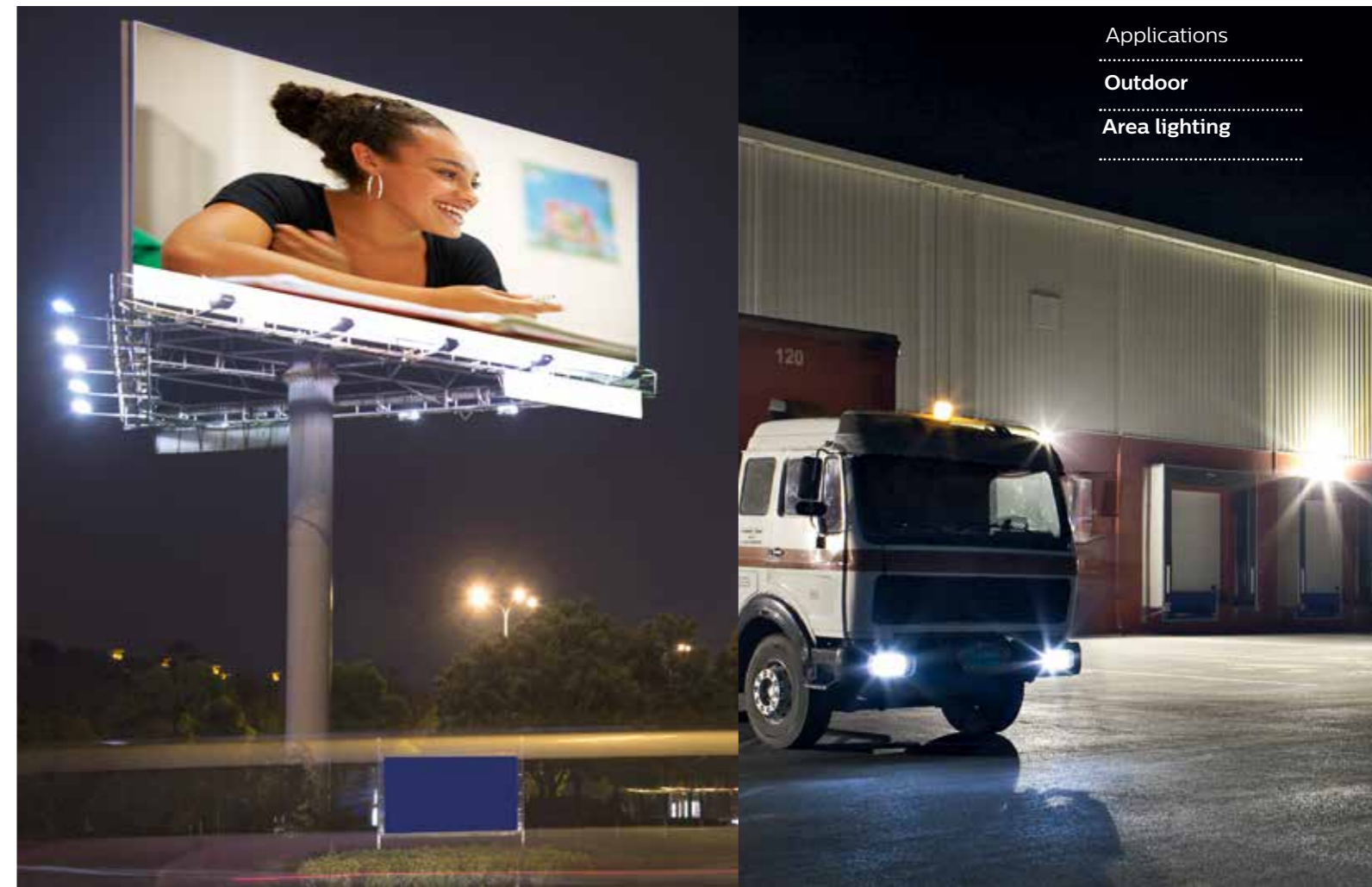
- Simple and faster installation
- Easy access for driver replacement

Technical specifications

Type	BVP120	
System Wattage (W)	35	70
IP Rating	IP66	
Lumen Output (lm)	3500	7000
System Efficacy (lm/W)	100	
Color Temperature (K)	5700	
CRI	70	
Housing	LM6 high pressure die cast aluminium	
Cover	Glass	
Mounting	Wall/ Bracket	
THD	<10%	
PF	>0.95	
Operating Voltage	140-270V AC 50 Hz	

Note

- All the specifications are nominal values and will have a variation of (+/-10%) at rated voltage of 240 V AC
- Other variant's available on requests



Applications

- Outdoor
- Area lighting



Uniflood 2

Philips Uniflood new a integral flood light with driver, highpower LED, PDC housing which is Highly efficient, Reliable and sturdy compared to similar LED, Halogen, Metal Halide and SON flood lights.

More brightness, more savings

Unique lens plate and choice of optics

- Ensures uniform lighting and higher spacing
- Reduced total cost of ownership
- Constant light output and distribution

Best in class driver and LED's

- Higher energy saving
- Constant light output over wide voltage range
- Maintenance free and longer life of 10 years*

Installer friendly

- Simple and faster installation
- Easy access for driver replacement

Technical specifications

Type	BVP122
System Wattage (W)	100-150
IP Rating	IP66
Lumen Output (lm)	11000-14600
System Efficacy (lm/W)	100
Color Temperature (K)	5700
CRI	70
Housing	LM6 high pressure die cast aluminium
Cover	Glass
Mounting	Wall/ Bracket
THD	<10%
PF	>0.95
Operating Voltage	140-270V AC 50 Hz

Note

- All the specifications are nominal values and will have a variation of (+/-10%) at rated voltage of 240 V AC
- Other variant's available on requests



Applications

Outdoor

Area lighting



Technical specifications

Type	City Cube Lx		City Cube Yx	
	35	70	35	70
System Wattage (W)	35	70	35	70
IP Rating	IP66		IP66	
Lumen Output (lm)	2500	7000	2500	5000
System Efficacy (lm/W)	70, 100		70, 100	
Color Temperature (K)	5700		5700	
CRI	70		70	
Housing	LM6 high pressure die cast aluminium		LM6 high pressure die cast aluminium	
Cover	Glass and polycarbonate diffuser		Polycarbonate diffuser	
Mounting	Bottom entry		Bottom entry	
THD	<10%		<10%	
PF	>0.95		>0.95	
Operating Voltage	140-270V AC 50 Hz		140-270V AC 50 Hz	

Note

- All the specifications are nominal values and will have a variation of (+/-10%) at rated voltage of 240V AC
- Available with special square pole

CityCube Post top

CityCube is a range of outdoor lighting products of two variants in pole tops. Its contemporary form and sleek presence makes it most suitable for all the modern buildings.

Redefining urbanscape

Unique and modern

- Ideal for modern building with glass facade
- Offer with Bracket and pole as full system
- Compact with option of no up-light

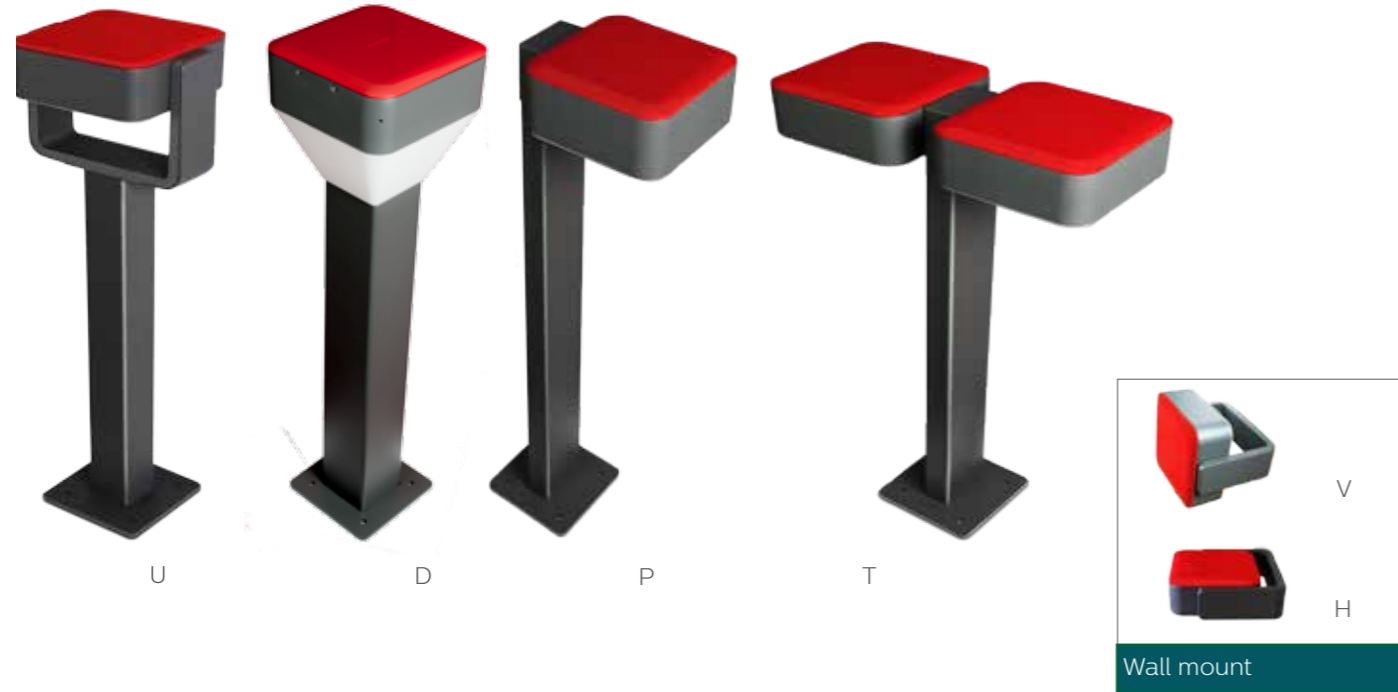
Unique lens plate

- Ensures uniform lighting and higher spacing
- Reduced total cost of ownership
- Constant light output and distribution

Best in class driver and LED's

- Higher energy saving
- Constant light output over wide voltage range
- Maintenance free and longer life of 10 years*





Technical specifications

Type	City Cube Wall	City Cube Bollard		
System Wattage (W)	8.5	8.5 (U)	14 (P)	17 (D, T)
IP Rating	IP65	IP65		
Lumen Output (lm)	500	400	50	900
System Efficacy (lm/W)	59	45, 65		
Color Temperature (K)	6500	6500		
CRI	70	70		
Housing	Die cast	Die cast		
Cover	Polycarbonate diffuser	Polycarbonate diffuser		
Mounting	Wall bracket	Base plate		
THD	<10%	<10%		
PF	>0.95	>0.95		
Operating Voltage	140-270V AC 50 Hz	140-270V AC 50 Hz		

Note

- All the specifications are nominal values and will have a variation of (+/-10%) at rated voltage of 240V AC

CityCube Wall mount and Bollard

CityCube Wall and Bollard is a range of outdoor lighting products in various shapes and mounting options. Its contemporary form and sleek presence makes it most suitable for all the modern buildings and outdoor areas like gardens and parks.

Redefining urban scape

Unique and modern

- Ideal for modern building with glass façade
- Offer with Bracket and pole as full system
- Compact with option of no up-light

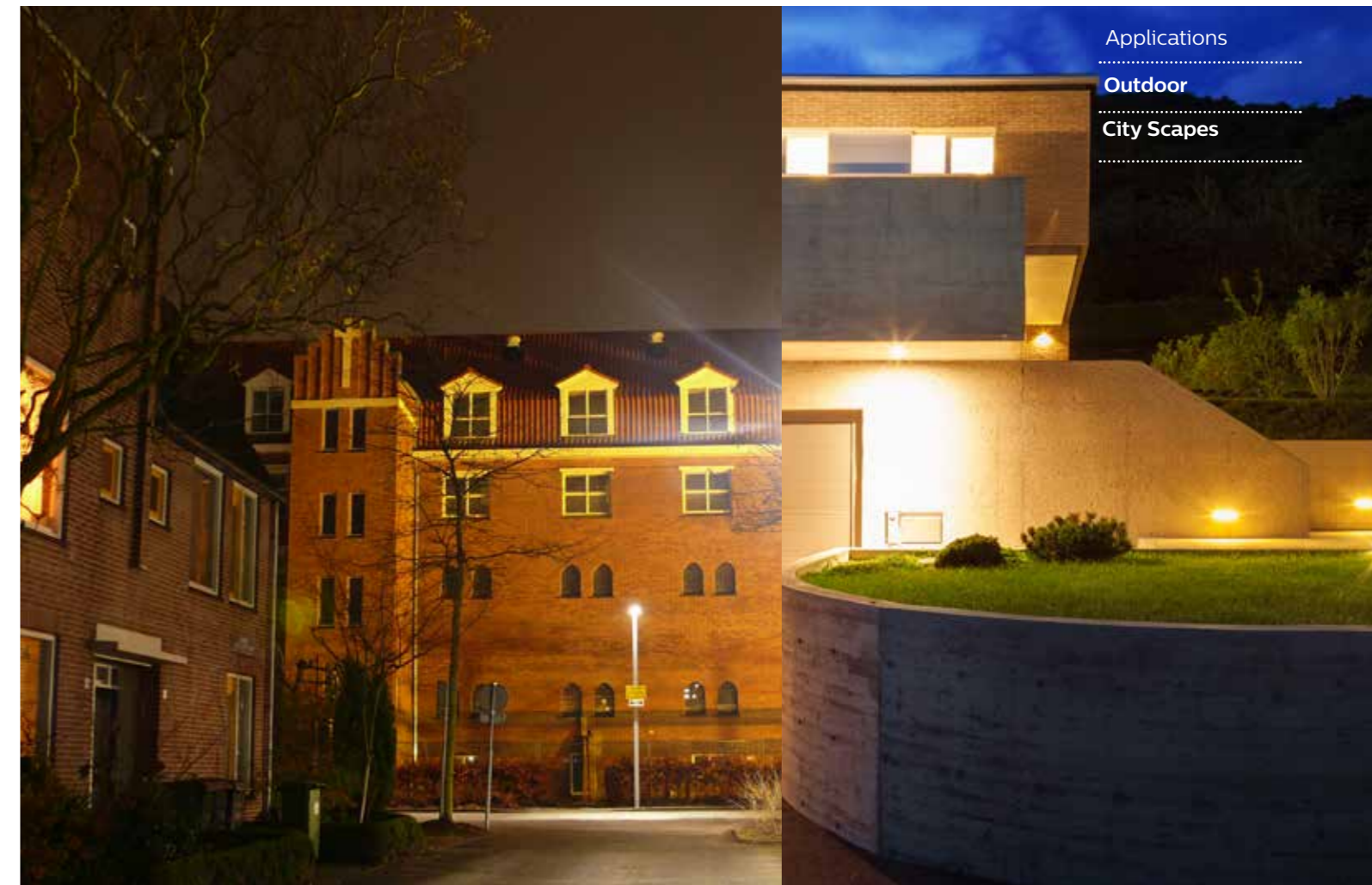
Unique lens plate

- Ensures uniform lighting and higher spacing
- Reduced total cost of ownership
- Constant light output and distribution

Best in class driver and LED's

- Higher energy saving
- Constant light output over wide voltage range
- Maintenance free and longer life of 10 years*

*Conditions apply





LED Post-top

Stylish, robust and reliable post top lantern using LEDs. Having good light distribution, limited upward light component that avoids light pollution, this luminaire is an affordable landscape lighting solution.

Reliable and cost effective

Affordable solution

This luminaire is highly affordable.

Highly reliable

With latest technology, the luminaire is highly reliable.

Nice visual appearance

It has nice aesthetic appeal.

Key features

- IP65 protection
- Integrated electronic driver
- Long life of 25000 hours

Technical specifications

Type	BGP161
System Wattage (W)	27
IP Rating	IP65
Lumen Output (lm)	2500 (4000K), 2300 (3000K)
System Efficacy (lm/W)	85
Color Temperature (K)	3000, 4000
CRI	>70
Housing	Aluminium die cast
Cover	Polycarbonate
Mounting	Pole mounted
PF	0.9
Operating Voltage	220-240V, 50/60 Hz



Applications

.....
outdoor areas



Key features

- Affordable
- Reliable and uniform asymmetric light
- Easy installation with equipped mounting box

Technical specifications

Type	BWG150
System Wattage (W)	4
IP Rating	IP67
Lumen Output (lm)	40 (WW), 50 (NW)
Color Temperature (K)	Warm white (3000), Neutral white (4000)
Housing	Die cast aluminium
Cover	Polycarbonate
Mounting	Wall recessed
Operating Voltage	220-24V, 50/60 Hz

LED Step-light

LED Step-light offers uniform asymmetric lighting. This product is easy to install and comes with ingress protection. It also comes with suitable mounting box.

Robust lighting solution

Long life

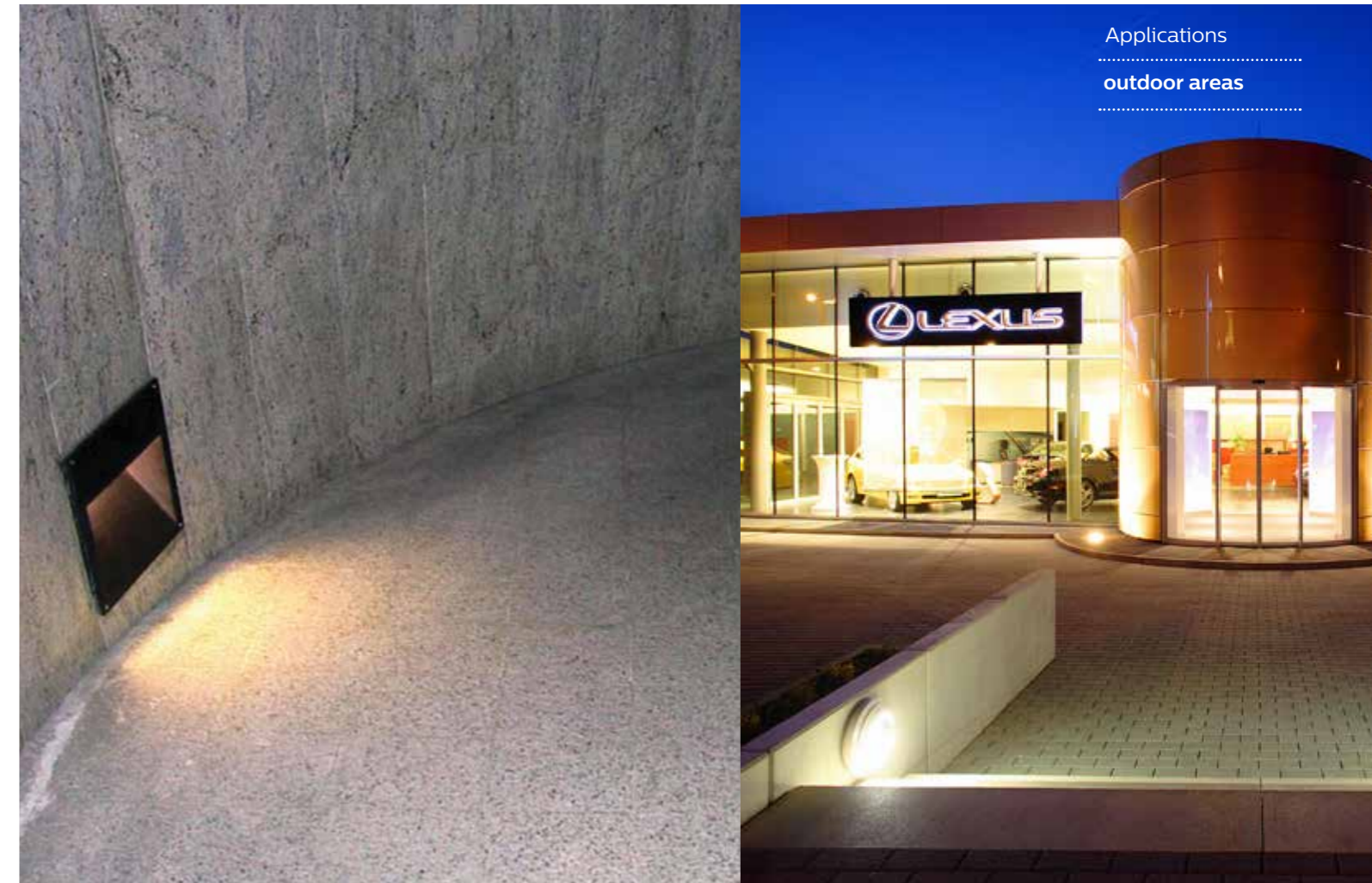
The luminaire has a long life span of 25000* burning hours.

Proved integrated electronic driver

The luminaire comes with integrated driver which makes it easy to install and maintain.

Proved IP67 protection

Robustly designed through strict process control to ensure the IP67 protection through lifetime.





Key features

- High ingress protection
- Multiple mounting options
- Easy installation

Technical specifications

Type	BGP 310
System Wattage (W)	6
IP Rating	IP65
Lumen Output (lm)	320 (WW, 12°), 378 (NW, 12°)
Color Temperature (K)	Warm white (3000), Neutral white (4000)
Housing	Die cast aluminium
Cover	Glass
Mounting	Spike, clip and surface
Operating Voltage	220-240V, 50/60 Hz

LED Spot

Philips LED spot lights are ideal for replacing conventional spot lights and provide accent lighting for a variety of applications. Easy to install, these products come with suitable mounting options like spike, clips & surface mounting.

Robust lighting solution

Long life

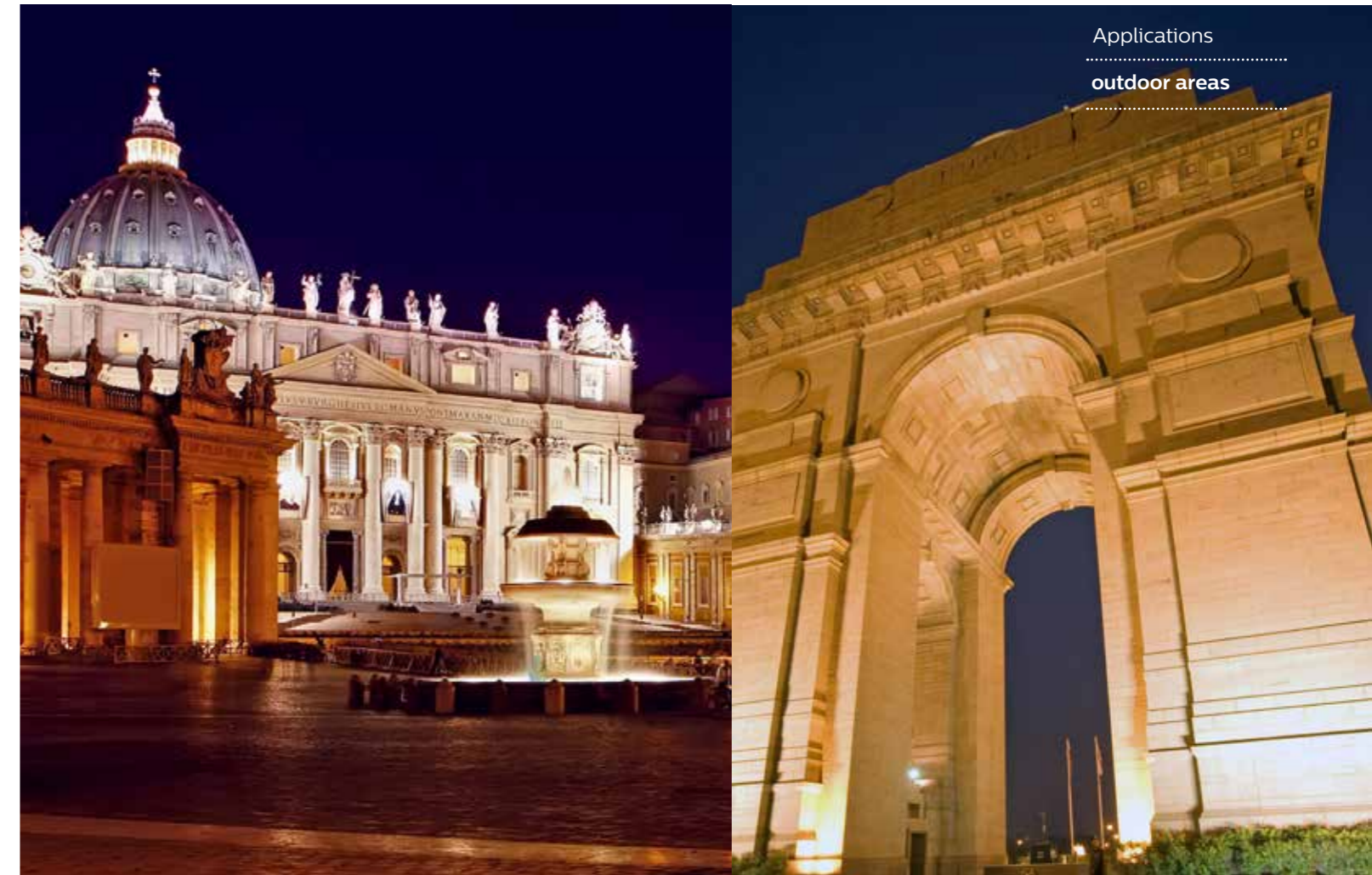
The luminaire has a long life span of 25000* burning hours.

Proved integrated electronic driver

The luminaire comes with integrated driver which makes it easy to install and maintain.

Proved IP65 protection

Easy to install and robust design.





Key features

- High ingress protection
- Long life
- Easy installation

Technical specifications

Type	BBP 330
System Wattage (W)	15.8
IP Rating	IP67
Lumen Output (lm)	790
Color Temperature (K)	Warm white (3000), Neutral white 4000
Housing	Die cast aluminium
Cover	Glass
Mounting	Floor recessed
Operating Voltage	220-240V, 50/60 Hz

Uplite

Philips LED Uplite offers accent lighting with easy to install and high ingress protection, and comes equipped with a suitable mounting box.

Robust lighting solution

Long life

The luminaire has a long life span of 25000* burning hours.

Proved integrated electronic driver

The luminaire comes with integrated driver which makes it easy to install and maintain.

Proved IP67 protection

Easy to install and robust design.

Applications

.....
outdoor areas





Key features

- Affordable
- Robust design and high reliability
- Easy installation with equipped mounting box

Technical specifications

Type	BBG150, BBG151
System Wattage (W)	3
IP Rating	IP67
Lumen Output (lm)	50 (WW), 55 (NW)
Color Temperature (K)	Warm white (3000), Neutral white (4000)
Housing	Die cast aluminium
Cover	Tempered glass
Mounting	Floor recessed
Operating Voltage	220-240V, 50/60 Hz

LED Marker

LED wall mount offers high level of durability with high impact resistance, ingress protection and comfortable soft lighting.

Robust and reliable lighting solution

Long life

The luminaire has a long life span of 25000* burning hours.

Proved integrated electronic driver

The luminaire comes with integrated driver which makes it easy to install and maintain.

Proved IP67 and IK10

Robustly designed through strict process control to ensure the IP65 protection and IK10 impact resistant through lifetime.

Applications

.....
 outdoor areas





Key features

- Reliable and impact resistant
- Easy installation
- Comfortable soft light and environment friendly

Technical specifications

Type	BCP150	BCP151
System Wattage (W)	8	8
IP Rating	IP65	IP65
Lumen Output (lm)	500 (WW), 600 (NW)	500 (WW), 600 (NW)
Color Temperature (K)	Warm white (3000), Neutral white (4000)	Warm white (3000), Neutral white (4000)
Housing	Die cast aluminium	Die cast aluminium
Cover	Polycarbonate	Polycarbonate
Mounting	Pole	Pole
Height (Meter)	0.5	0.8
Operating Voltage	220-240V, 50/60 Hz	220-240V, 50/60 Hz

LED Bollard

LED Bollard offers a high level of durability with high impact resistance. It is easy to install, comes with ingress protection and provides comfortable soft lighting.

Reliable and cost effective

Long life

The luminaire has a long life span of 25000* burning hours

Proved integrated electronic driver

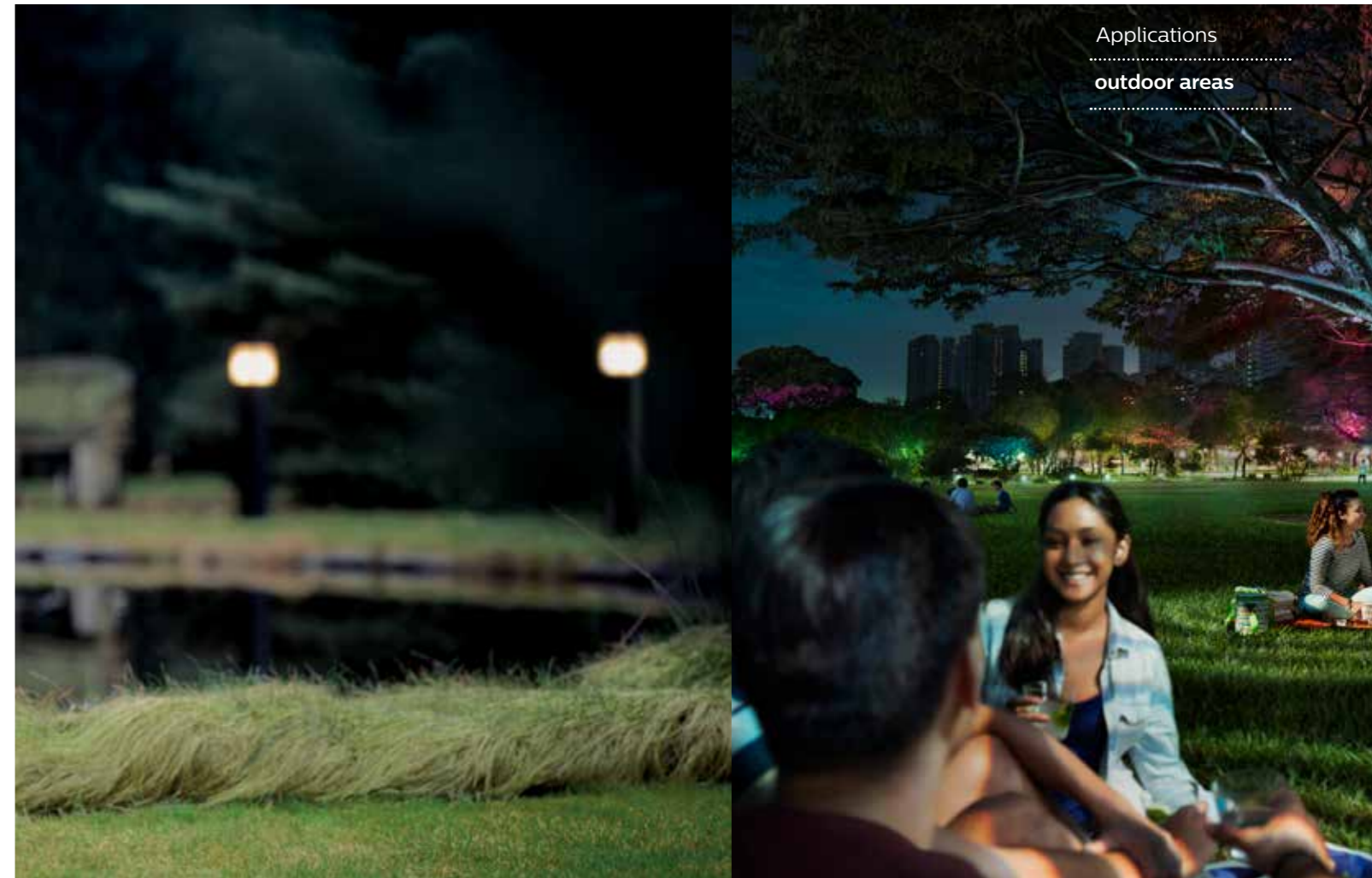
The luminaire comes with integrated driver which makes it easy to install and maintain

Proved IP67 and IK10

Robustly designed through strict process control to ensure the IP65 protection and IK10 impact resistant through lifetime.

Applications

.....
outdoor areas





Technical specifications

Type	BRP022 and BRP409 Family
System Wattage (W)	7 12 15 17 20 21 30 36 45
IP Rating	IP66
Lumen Output (lm)	750 -5000
System Efficacy (lm/W)	>100
Color Temperature (K)	5700
CRI	>70
Housing	LM6 High pressure die cast aluminium
Cover	Polycarbonate
Mounting	Pole mounted
Dimming	Optional
Hybrid Charger	Optional
Pole Mounting Height	4m, 5m, 6m, 7m
Solar Charge Controller	Integrated with Luminaire
Charging Efficiency	>95%
Operating Voltage	12/24V DC

Note

- All the specifications are nominal values and will have a variation of (+/-10%) at rated voltage of 240V AC
- Higher variant's available on requests

Solar street lighting system

Solar powered outdoor lighting products are ideal for lighting the area in remote locations usage to reduce dependency on conventional power and contribute towards green energy. Reliable and long life makes this solution effective in fulfilling our present and future lighting requirements.

Efficient and environment friendly

No running cost

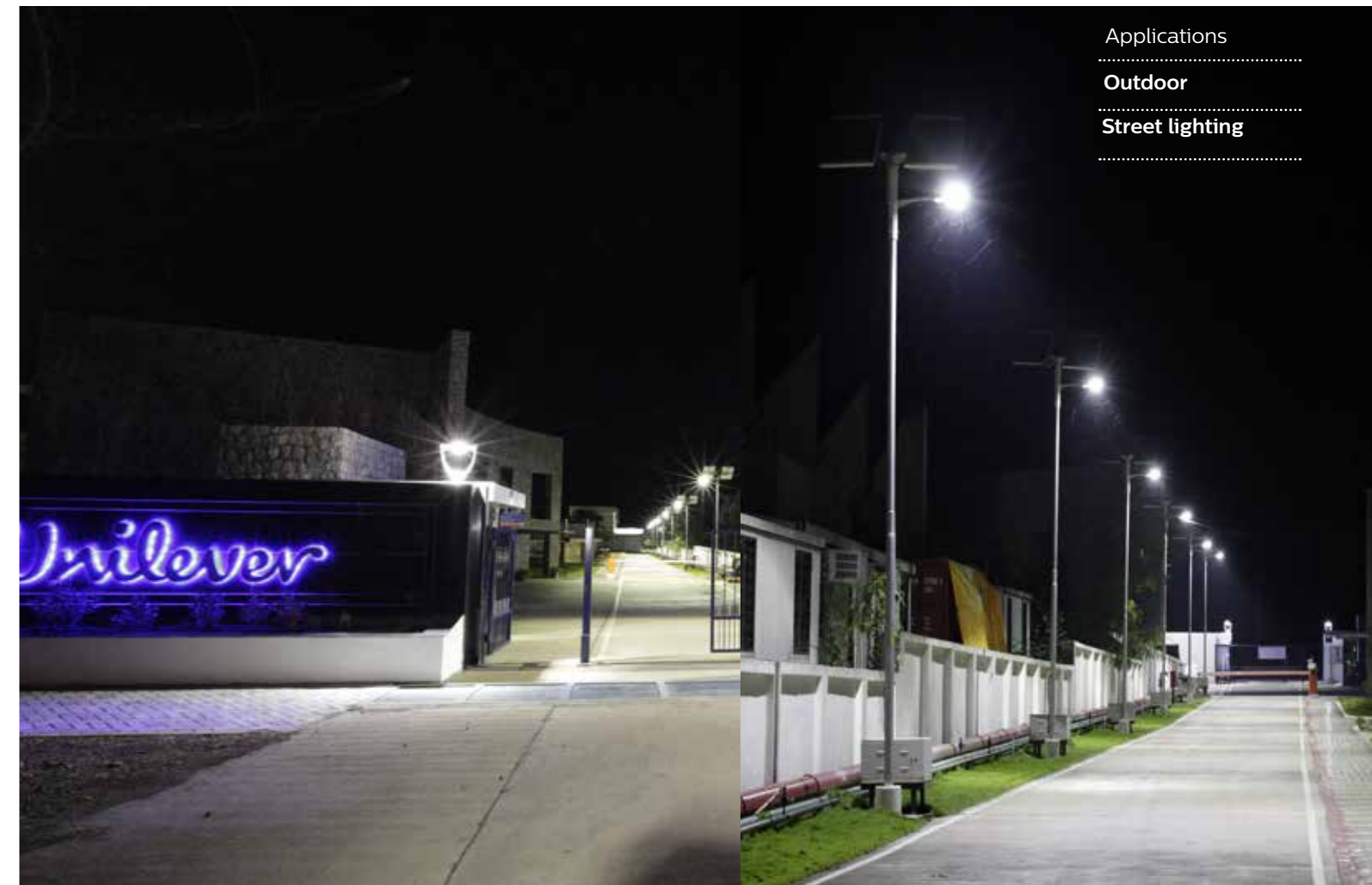
This luminaire runs with natural source of energy, hence there is no electricity cost.

IP66 protection

The luminaire is dust tight and water proof.

Green solution

Runs 100% on solar energy.



Applications

Outdoor

Street lighting



Vaya Linear

Vaya Linear is a reliable and cost effective LED lighting fixture designed for white or mono color lighting effects. With wide and elliptical beam options, Vaya Linear MP is ideal for wall washing and grazing applications. Two lengths and daisy-chain connectors make this product versatile and easy to use.

Reliable and cost effective

Slim outdoor rated housing

This luminaire is extremely slim making installation possible in narrow coves.

Unique beam angle for low level grazing/ outdoor cove

Highly suitable for low level grazing applications.

Back-to-back connections using built-in connectors

This luminaire is simple and faster to install.

Key features

- Available in 4 CCTs and 4 mono colors
- Auto ranging 100-240 V, 50/60 Hz Input
- Eco-friendly

Technical specifications

Type	Vaya Linear
System Wattage (W)	10
IP rating	IP66
Lumen Output (lm)	600
System Efficacy (lm/W)	60
Color Temperature (K)	4000
CRI	80
Housing	Extruded aluminium, anodized finish
Cover	Glass
Mounting	Location adjustable and tilting surface-mount bracket
THD	<20%
PF	>0.9
Operating Voltage	100-240V



Applications

Canopy cove

Color kinetics product range

Theatrical / Touring



Available in
Color-Changing LED Lighting Systems
IntelliWhite LED Lighting Systems

Graze / Wash



Available in
Color-Changing LED Lighting Systems
EssentialColor LED Lighting Systems
EssentialWhite LED Lighting Systems
IntelliWhite LED Lighting Systems

Flood / Spot



Available in
Color-Changing LED Lighting Systems
EssentialColor LED Lighting Systems
EssentialWhite LED Lighting Systems
IntelliWhite LED Lighting Systems

Cove



Available in
Color-Changing LED Lighting Systems
EssentialColor LED Lighting Systems
EssentialWhite LED Lighting Systems
IntelliWhite LED Lighting Systems

Direct View



Available in
Color-Changing LED Lighting Systems
EssentialWhite LED Lighting Systems

Task / Downlight



Controllers



Controller Accessories



LED Lamps

Table of Contents

Product	Pg
MR16 lamp	110
LEDtube	112



MR16 lamp

Philips MASTER LED MR16 dimmable lamp integrates leading high power LED light source and compact high efficiency driver into a traditional halogen form factor. It is ideal for applications including track lighting, general architectural and landscape lighting.

Cost effective and reliable

Retrofit

Retrofits into vast majority of GU5.3 based fixtures.

Long life

Long lifetime of 40,000 hours.

High energy savings

Up to 80%* energy saving compared to standard halogen lamps.

Key features

- ROHS compliant
- Clearly defined beam spread
- Eco-friendly

Technical specifications

Type	MR16	
System Wattage (W)	3	5
IP Rating	IP20	
Lumen Output (lm)	260	435
System Efficacy (lm/W)	86	
Color Temperature (K)	2700, 6500	
CRI	80	
Housing	NA	
Cover	NA	
Mounting	Holder	
THD	NA	
PF	NA	
Operating Voltage	220-24 V, 50/60 Hz	





LEDtube

Philips Essential LEDtube integrates LED light source with glass cover design into traditional linear fluorescent form. It consumes only 17W and offers energy saving up to 57%*.

High return on ROI

High savings

Essential LEDtube offers high energy savings of up to 57%*.

Attractive payback

It offers high ROI and covers its cost in 6 months*.

Eco-friendly

With no mercury content the LEDtube is eco-friendly and environment friendly.

Key features

- No glare discomfort and uniform light distribution
- No external driver required
- Long life of 30000* hours

Technical specifications

Type	LEDtube
System Wattage (W)	17
IP Rating	IP20
Lumen Output (lm)	1600
System Efficacy (lm/W)	94
Color Temperature (K)	6500
CRI	80
Housing	Glass
Cover	Glass
Mounting	Batten mounted on wall
THD	<25%
PF	>0.9
Operating Voltage	140-280V



Applications

 Process areas

 Warehouse

Controls

Table of Contents

Product	Pg
OccuSwitch	116
Amplight	118
Dynalite	120



OccuSwitch

OccuSwitch is a movement detector with a build-in switch. It will switch off the lights in a room or area when it is vacant and thus save energy. Occuswitch can switch any load up to 6 A and control an office area of around 20Sqm for small movement (e.g. desk work) and around 50Sqm for large movement (e.g. walking). It's smart daylight sensing technology offers additional saving through daylight override and daylight switching.

Smart, efficient and reliable

Plug and play

OccuSwitch offers a single function occupancy control. It is very easy to install and can be applied without any commissioning.

Smart savings

Energy consumption based upon actual usage, instead of connected load. It offers good pay-back scenario with savings up to 30%.*

Display true color

Inbuilt photocell sensor to switch off lights when desired lighting levels are available through daylight

Key features

- Automatic control
- Daylight override and switching
- Smart timer

Daylight sensing

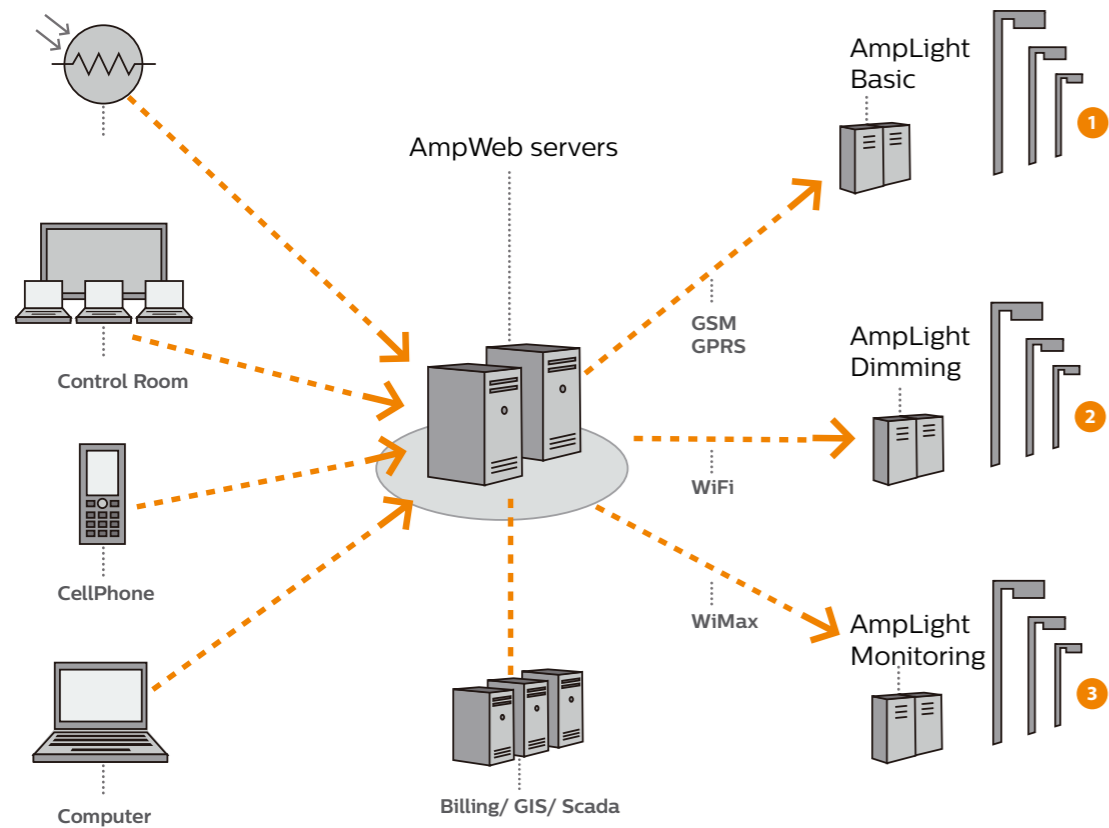


Occupancy sensing



Applications

Private office



AmpLight

The AmpLight- lighting control solution is a complete web-based solution with advanced communication and easy integration with existing installations.

It perfectly combines cost saving and less emission without compromising quality and safety.

- **Dimming at off-peak traffic hours**
- **Reduced maintenance costs**
- **Burn hour optimization**
- **Accurate switch ON/ OFF**

AmpLight- full solution overview

1. AmpLight Basic

Provides basic on/ off functionalities via the CPU and a switch module. With optimizing the on/ off settings of the street lights, **it results in Wsavings of 8-10%***.

2. AmpLight Dimming

Dimming module allows reduction in light level and hence lowers electricity consumption, **providing up to 35%* energy savings.**

3. AmpLight Monitoring

With an additional module, the control cabinet is fully monitored and will immediately report power failures or cable breakages to the central server or via SMS to the supervisor.

Key advantages

AmpLight solution monitors and controls the control cabinets and provides **additional energy savings of up to 35%***. Key advantages of a centralized solution includes:

- Controls cabinet fault monitoring
- Automated reading of digital power meters in control cabinets
- Burn hour reports for proactive bulb change
- High up-time and immediate fault rectification
- One central photocell ensuring uniformity
- Improved quality of light
- Simplified maintenance
- Real-time control
- Load balancing and load shedding
- Area specific settings
- Fast reaction to special traffic or weather conditions



Philips **Dynalite** range

DDRC420FR Relay Controller

Robust control of switched loads

The Philips Dynalite DDRC420FR provides control of any type of switched load, including difficult lighting loads. The four-channel device supports all types of switched loads up to 20A inductive.



Key features

- Feed-through power circuit design
- Flexible mounting solution
- Inbuilt diagnostic functionality
- Multiple wiring schemes supported
- Hardware override

Dynalite range

Philips Dynalite range of products comprises: controllers, into which lighting and other loads are connected; user interfaces, which give user the power to interact with the system; and integration devices, which are used to connect additional systems so they communicate/ perform seamlessly as one. A comprehensive suite of envision software products and network accessories completes our extensive offering.

Key benefits

- Preset lighting control
- Distributed control and monitoring
- Ease of installation and configuration
- Flexibility in design
- Energy savings
- Scalability
- Perfect LED dimming

DDTC001 Timeclock

Tamper resistant time control

The DDTC001 timeclock provides a tamper resistant solution for time-based event control on a DyNet network.



Key features

- Remote programming
- Advanced clock controls
- Performs as an energy management controller
- Flexible mounting solution

DLPE 9100 User control panels

Sophisticated and simple

A local control panel allows occupants to adjust the lighting control system to suit their requirements. There is a wide selection of options to enable the various functions required of the control system and to help users intuitively interact with different features.



South

Philips Lighting India Ltd,
Sunny Side, #8/17, 3rd Floor, C
Block, Shafee Mohammed Road,
Greams Road, Chennai -600006
Tel :- 91 44 6650 1000
Fax :- 91 44 6650 1075
Email : lighting.india@philips.com

Philips Lighting India Ltd,
Philips Innovation Campus
Manyata Tech Park, Nagavara
Bengaluru-560045
Tel : 080-4189 0000
Fax :- 080 6692 9930
Email : lighting.india@philips.com

Philips Lighting India Ltd,
6-3-1109 / I / P/ 103, 3rd floor
Jewalpawani Towers,
Rajbhavan Road,
Somajiguda, Hyderabad
Tel :- 040 6646 7676 / 4825
Fax :- 040 6678 7974
Email : lighting.india@philips.com

West

Philips Lighting India Ltd,
Boomerang, B2 Wing,
5th Floor, Unit No. 506,
Chandivali Farm Road,
Near Chandivali Studio,
Andheri (East), Mumbai 400072
Tel :- 91 22 6691 2000
Fax :- 91 22 6691 2389 / 66912398
Email : lighting.india@philips.com

Philips Lighting India Ltd,
602, Heritage Tower, 6th floor,
Behind Visnagar Co-op Bank,
Near Gujarat Vidyapith, Usmanpura,
Ahmedabad, Gujarat
Tel :- 91 79 2754 0708
Fax :- 91 79 2754 0666
Email : lighting.india@philips.com

East

Philips Lighting India Ltd,
C/o Mangalam Business Center
22 Camac Street, Block B, 6th Floor
Kolkata 700 016
Tel : 91 33 2486 7621-24
Fax : 91 33 2486 8318
Email : lighting.india@philips.com

North

Philips Lighting India Ltd,
9th Floor, DLF - 9B, DLF Cyber City
DLF Phase 3, Gurgaon 122002
Tel :- 91 124 460 6000
Fax :- 91 124 460 6666
Email : lighting.india@philips.com

Philips Lighting India Ltd,
8th floor, DLF - 9B, DLF Cyber City
DLF phase 3, Gurgaon 122002
Tel :- 91 124 460 6000
Fax :- 91 124 460 6666

Contact customer service
executive at
1800 102 2929 (Toll free)
1860 180 1111, 0124- 4291111
"Standard call rates apply"

Philips Lighting Bangladesh Ltd,
House No. 22, Road: 113/A
Chaklader House, Gulshan-2
Dhaka-1212

Philips Lighting Lanka Pvt. Ltd,
6th floor, East Trade Tower,
World Trade Center, Colombo-1
Tel :- 94 11 233 4362/ 233 4312

For more information contact us at lighting.india@philips.com or call at **1800 102 2929**
www.lighting.philips.co.in

